



Mount Sinai Hospital
Joseph and Wolf Lebovic Health Complex

Bridgepoint
Active Healthcare

Lunenfeld-Tanenbaum
Research Institute

Circle of Care



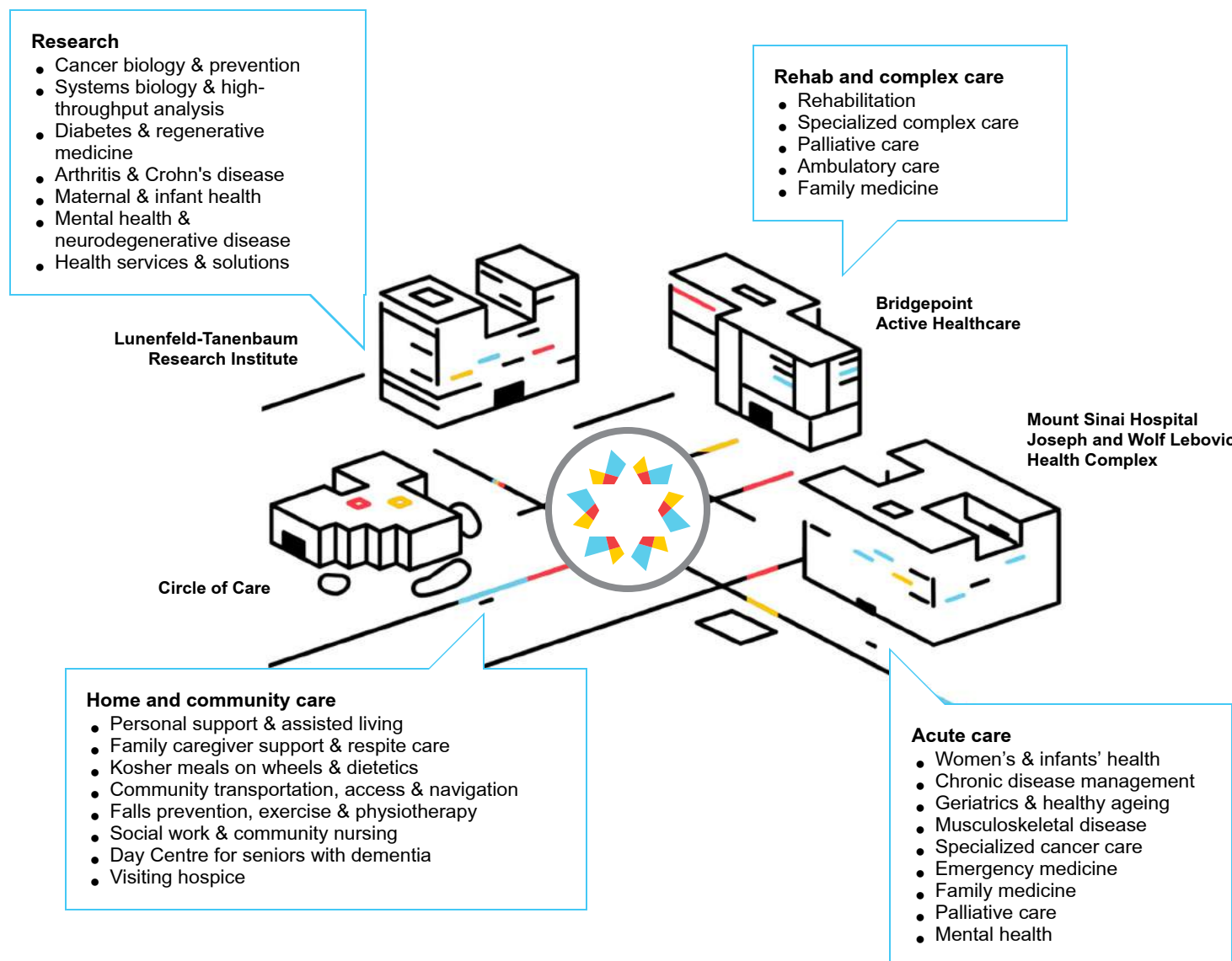
ANNUAL
REPORT
2015/16

HEALTHY BEGINNINGS TO HEALTHY AGING

The best care happens when things connect.

1 Where Care Connects | 2 A Message from Our Leaders | 6 Sinai Health System | 8 Renew Sinai Health | 10 Mount Sinai Hospital |
12 Bridgepoint Active Healthcare | 14 Lunenfeld-Tanenbaum Research Institute | 16 Circle of Care | 18 Board of Directors |
20 Our Financials | 22 Sinai Health Foundation | 24 Sinai Fund | 25 Our Events | 28 Sinai Health Foundation Donor Listings |
44 Bridgepoint Foundation | 46 Bridgepoint Foundation Donor Listings | 48 Social Media | 50 Thank You Messages |
51 Our Vision, Mission and Values

Health care is changing because people's needs are changing. That's why we created Sinai Health System, four unique organizations that have come together to deliver a seamless continuum of care.



A Message from Our Leaders



Jay S. Hennick | Chair, Board of Directors, Sinai Health System

SINAI HEALTH SYSTEM

Healthy beginnings to healthy aging

Sinai Health System's first year has been punctuated by collaboration, innovation and remarkable success

Since the amalgamation of Bridgepoint Active Healthcare, Circle of Care, Lunenfeld-Tanenbaum Research Institute and Mount Sinai Hospital in January 2015, Sinai Health System has been charting a course to create a new, integrated system of care. With a vision to push the boundaries and realize the best health and care for people with complex care needs, as you will read in our inaugural annual report, we have made substantive progress in making this vision a reality.

Over the past 12 months, the first stage of our journey has been focused on integrating our structures and processes so that we can transform the care we provide and enable a seamless system to support the best health and care. In a very short period of time we delivered upon our year-one goals including a system-wide leadership structure, increased efficiencies and cost savings and, most importantly, increased patient

access to care. Underpinning and guiding this work is a common vision, mission, strategy and brand.

Unquestionably, patients are at the heart of our work and are fueling our relentless quest for excellence. With the corporate and system integration well under way, we are now beginning to actualize opportunities for clinical integration. Early wins include accelerating hip fracture recovery through a system approach in the orthopaedics program; ensuring patients receive the right care, in the right place, at the right time with the newly launched Assess and Restore program and decreased wait times for tests.

While integration has undoubtedly been a key priority, of equal importance is our ongoing commitment to high quality care, research and education. These efforts are illustrated by receiving Stroke Distinction



Joseph Mapa | President & CEO, Sinai Health System

by Accreditation Canada at the Bridgepoint campus; Mount Sinai nurses achieving the prestigious Magnet® designation; attracting world-class researchers such as Dr. Graham Collingridge, who was awarded the world's top Brain Prize; and expanding our relationship with the Wightman-Berris Academy across Mount Sinai and Bridgepoint.

Philanthropy is a vital contributor to the future of Sinai Health System and this joint report with Sinai Health Foundation underscores the interdependent strategies of our two organizations. Each and every gift makes a direct impact and enables the best care and research. We are enormously grateful for the ongoing support of the entire donor community and thank you.

Behind Sinai Health System of course is a team of over 9,000 staff and volunteers who are championing our vision from bench to bedside. We would like to extend a sincere thank you to all of our staff, physicians and volunteers. The success of Sinai Health System is a direct reflection of your commitment and passion. It's because of you that we are viewed as leaders in our field.

As we look forward, we are steadfast in our journey to become Canada's leading integrated health system. By working together with partners, community stakeholders and the government, we will continue to reimagine the possibilities so we can respond to the changing needs of our patients and their families, as well as the health-care system. Together with David Denison, former Chair, Bridgepoint Health Board of Directors and Vice-Chair, Sinai Health System, and Marian Walsh, former CEO, Bridgepoint Active Healthcare, and Associate CEO and Chief Transformation Officer, Sinai Health System, a future has been forged for a great health-care system – the sum of four excellent organizations: Mount Sinai Hospital, Bridgepoint Active Healthcare, Lunenfeld-Tanenbaum Research Institute and Circle of Care chaired by Allan Rudolph. Together with the entire Sinai Health System team, we are enormously privileged to steward this vision for our patients and the health sector.

Jay S. Hennick

Joseph Mapa

A Message from Our Leaders



Brent S. Belzberg | Chair and President, Board of Directors, Sinai Health Foundation

SINAI HEALTH FOUNDATION

Thank you for helping us shape a new era in connected care

As we look back on this past year, we reflect on the unwavering support of our community and the incredible accomplishments that have empowered our clinical and research staff to transform care. It has also been a year of tremendous change that has poised our Foundation for even greater impact as we come together to support Sinai Health System.

We have collectively been inspired by the belief that connected care is the best care. That is why we have brought four organizations together to do more for the people who need us the most. To create an integrated model of care that responds to the changing health needs of Ontarians.

To that end, Mount Sinai Hospital Foundation of Toronto officially changed its name to Sinai Health Foundation to better support the needs of the organization in an effective and seamless manner.

We must also celebrate another incredible milestone; thanks to our dedicated donors we have surpassed the \$300-million mark in our \$500-million Campaign to Renew Sinai, the largest campaign in our history. This past year alone, we raised \$50 million in new

commitments that helped to keep our campaign on track. These critical funds will help deliver connected care to those with the greatest, most complex health needs. Because of valued donors like you, people can begin to experience seamless transitions, more access to clinical expertise, revitalized facilities and groundbreaking research that fuels innovation in care.

In this report, you will see shining examples of how philanthropy is impacting care across Sinai Health System. Every gift is felt deeply by the thousands of patients who rely on the exceptional care that is provided across our campuses.

One of those examples is the redevelopment of the lobby at Mount Sinai Hospital, Joseph and Wolf Lebovic Health Complex, an updated space that



Kevin Goldthorp | CEO, Sinai Health Foundation
EVP, Advancement and Marketing, Sinai Health System
(CEO, Bridgepoint Foundation)

provides patients with the access, services and respite that are essential to connected care. This renewal was entirely funded by generous donors and includes our new state-of-the-art Brent & Lynn Belzberg Donor Recognition Centre showcasing our gratitude. A digital canvas standing 50 feet long by 12 feet or 21,000 pixels wide and makes a lasting impression on the 10,000 visitors passing through the lobby every day.

Visitors will also experience the beautiful Hennick Family Wellness Gallery which includes an important collection from the late Sorel Etrog. The lobby redevelopment also includes the Mark & Natty Nashman entrance way, Robert Rubinoff Hall of Chairmen, Phillip & Peggy DeZwirek Family Boulevard, Sam & Sarah Hennick Information Centre, Helen Oelbaum Simpson Registration, Stupp/Cohen Patient Education Pavilion, including the Cyril and Dorothy, Joel and Jill Reitman Patient Education Room and the RioCan Food Hall.

Our annual Dinner with Scientists gala was another moment of pride where we celebrated over 30 years of innovation and excellence at the Lunenfeld-Tanenbaum Research Institute. The event brought together 550 guests from the scientific and philanthropic communities at The Carlu for an evening of curiosity and possibility, raising an incredible \$1.1 million for research.

Dinner with Scientists was just one of the 35 events that support our cause each year. Thank you for picking up a golf club, strolling for babies, biking, buying jewelry or simply helping us sell tickets or attract sponsors. Your tireless efforts have helped us raise nearly \$5 million through our signature and community events.

Speaking of community, I also wanted to express our gratitude to all our community engagement groups: Mount Sinai Hospital Auxiliary, Future Sinai, Leadership Sinai and Venture Sinai who are all essential in championing our cause and fundraising on our behalf.

Thank you for your continued support and for joining us on our journey to build Canada's leading integrated health system. Together, we are shaping a new era of connected care.

signed

Brent Belzberg

signed

Kevin Goldthorp

Sinai Health System



Leading the future of health care today

In January 2015, Sinai Health System set an ambitious goal to be an exemplar for high quality integrated care for patients with complex care needs. While we are only one year young, we are already transforming the future of health care.

The amalgamation of Mount Sinai Hospital, Bridgepoint Active Healthcare, Lunenfeld-Tanenbaum Research Institute and Circle of Care as Sinai Health System has made the sum of our parts better for patients and health care in Ontario. While we are guided by strong business practices, we are driven by our vision of being Canada's leading integrated health system. In a short time, we have made tremendous progress and are truly pushing the boundaries to realize the best care.

Accelerated hip fracture recovery

We created a new clinical pathway for patients who have experienced hip fractures. By bringing together the orthopaedic surgical teams at Mount Sinai and the rehabilitative team at Bridgepoint, as well as an interprofessional team of nursing, social work and occupational therapists to map out the most effective

course of treatment and recovery for patients we have seen extraordinary results:

- We doubled hip fracture referrals from Mount Sinai to Bridgepoint.
- Patients' length of stay in hospital decreased by – 22% which means that they returned to their home sooner.
- The reduction of patient length of stay exceeded best practice benchmarks – making us a top-ranking performer in this area.
- Our integrated care team is producing excellent patient outcomes and improved patient experience.



Direct admission from Mount Sinai Emergency Department to Bridgepoint

Patients arrive at Mount Sinai's Schwartz/Reisman Emergency Centre requiring different levels of care. Some patients require an admission into hospital, however, some patients, who are not quite healthy enough to be sent back home require some specialized medical support as a result of complex health conditions. In the past, those patients would first have to be admitted to Mount Sinai. This exposed them to additional risks associated with hospital stays, and used up resources that are better directed at more acute cases. This year, over 50 patients were sent directly from our Emergency Department to Bridgepoint, avoiding an unnecessary hospital stay, putting them on the road to faster recovery.

System-wide physician access

Bridgepoint clinicians no longer need to send patients to an acute care hospital to be cared for by a General Internal Medicine physician when there is a change in their condition that can be effectively managed at Bridgepoint. Sinai Health System physicians of all specialties now provide consultations across the system either in person, by phone or by telemedicine. This ensures timely access to experts and reduces the need to shuffle patients back and forth between hospitals.

Faster test results from cardiologists

Waiting for test results from an electrocardiogram (ECG) is frustrating for both patients and doctors. To address the issue for patients at Bridgepoint Active Healthcare, we brought all ECG readings for Bridgepoint patients to Mount Sinai. The result:

- Reading turnaround time down by 90% and decreasing further.
- Improved quality of readings and length of stay for Bridgepoint patients.
- Backlog of unread tests eliminated.

Laying the foundation for a bright future

Since the creation of Sinai Health System in January 2015, we have been integrating our processes and structures to support long-term success. Today, as a result of a collaborative focus across Sinai Health, we are a stronger, smarter, and a more nimble organization. Here are a few of our more notable accomplishments:

- ✓ One Sinai Health System Board of Directors and Committees
- ✓ One integrated executive team
- ✓ Single Medical Advisory Committee (MAC) including harmonized Clinical Practice Committee
- ✓ Launch of a new brand, vision, mission, values
- ✓ Coordinated the management of Foundation resources
- ✓ 400% increase in medical residents at Bridgepoint through the Wightman-Berris Academy
- ✓ Lunenfeld-Tanenbaum Research Institute integrates with Bridgepoint Collaboratory, adding new Health Services pillar
- ✓ Integrated 13 corporate and clinical support functions including Human Resources, I.T, Infection Control, Pathology and Lab Medicine and Corporate Communications
- ✓ Single Quality Improvement Plan across sites
- ✓ Single HAPS/financial submission for Sinai Health System
- ✓ Harmonized Professional Practice and Quality, Patient Safety accountability structure

"Our integration has been an amazing transformation — not just for us, but for entire health-care system. We are leading the way in integrating care right across the continuum, from primary care to hospital care to home care. We're bringing all those pieces together and committing ourselves to changing the experience for the most complex patients in our healthcare system."

**— Marian Walsh, Associate CEO
and Chief Transformation Officer**

Renew Sinai Health

Hospitals are the intersection of research, healing and wellness. Leading the next frontier of health care means having modern facilities ready to embrace innovation, best practices and 21st century thinking. Renew Sinai is transforming our environment so that our staff can provide the best experience for the thousands of patients and families who walk through our doors each day.



Transforming our facilities for better patient outcomes

We have set our sights on the next phase of redeveloping Mount Sinai Hospital, Joseph and Wolf Lebovic Health Complex, underscoring our commitment to redefining the future of health care for Toronto and the province.

Over the past several years, Mount Sinai Hospital has grown our capacity to care by opening state-of-the-art spaces for patients in our Frances Bloomberg Centre for Women's and Infants' Health program and General Internal Medicine. This year we began preparation for the next phase of renovation and expansion. This ambitious plan will:

Bring state-of-the-art surgical facilities to our patients

Sinai Health System is renowned for its surgical excellence, caring for more than 16,000 patients each year with cancer, inflammatory bowel disease and joint disease. The new space will be a united and technologically advanced surgical floor designed to help patients recover faster.

Meet the GTA's surging need for emergency medicine

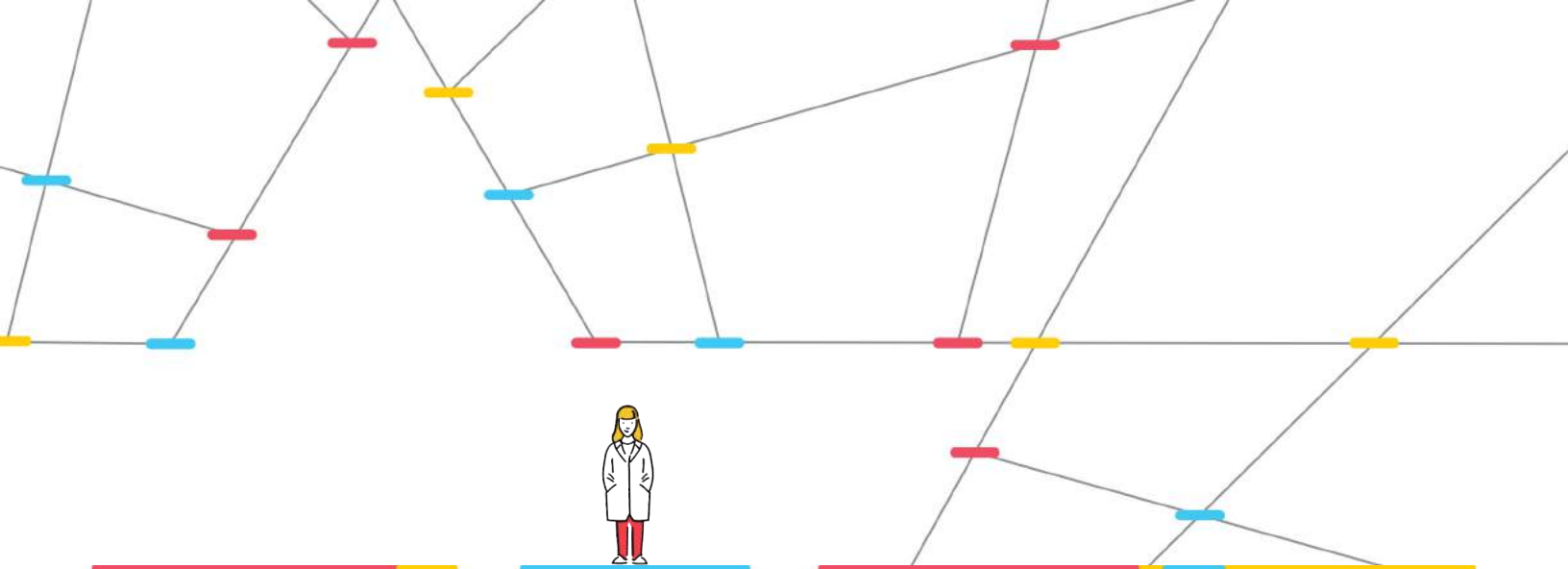
Provincially recognized for low wait times, our emergency department sees 65,000 patients each year – 100% more

than our space was designed to accommodate. We are recreating and doubling the size of the Schwartz/Reisman Emergency Centre to meet the demand of Toronto's intensifying population.

Help our most critically ill patients recover faster

The physicians and nurses who work in our Intensive Care Unit (ICU) are industry leaders and award winners, but our clinical space is outdated. For our most critically ill patients, we are relocating the ICU, increasing the number of beds, improving comfort for patients and visitors and helping to prevent complications.

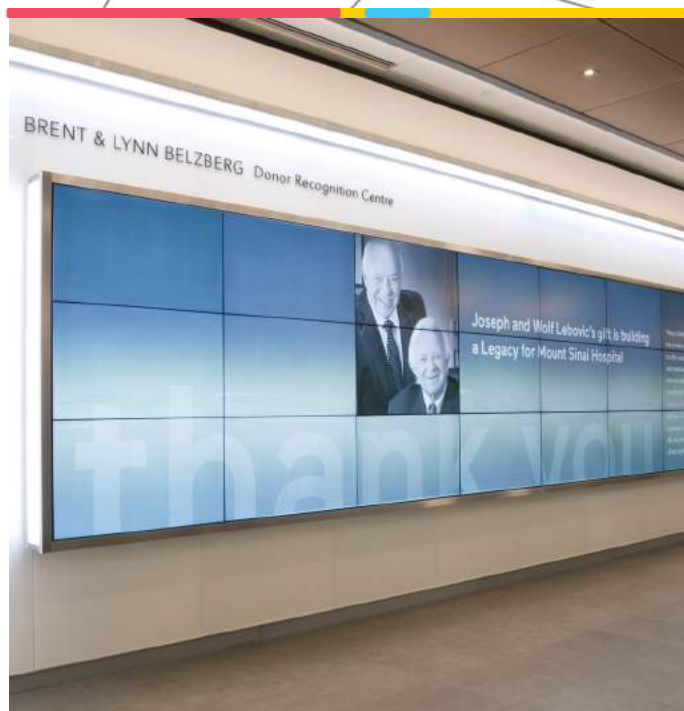
In conjunction with the renewal of these clinical areas, this project will also see the upgrade of key infrastructure elements within the hospital to support the renovated areas and to meet today's standards and codes.



Bridgepoint Active Healthcare – A healing campus of care

Last year, while we marked the start of a journey as Sinai Health System, we also concluded a 13-year journey of transforming Bridgepoint and creating a campus of healing. Guided by a philosophy of care that incorporates all elements of health and wellness, in November 2015 Bridgepoint completed the final phase of its strategic redevelopment and opened a 10-acre campus of care.

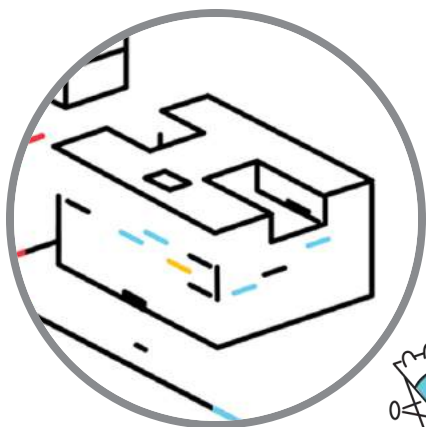
This breathtaking campus includes beautifully landscaped parks, walkways, gardens, sculptures by renowned Canadian artist William Lishman, and water features to encourage activity and symbolize a rejuvenation of the Riverdale community. This internationally acclaimed and multi-award winning facility is backed by clear evidence that environments can reduce stress, better engage patients and staff in care and inspire patients on their road to recover. Today, Bridgepoint is heralded as an exemplar for hospitals and infrastructure, and is a true legacy for the community and future generations.



Community Support: A revitalized gateway to care

On any given day, 10,000 patients, visitors and staff pass through the lobby of Mount Sinai Hospital, Joseph and Wolf Lebovic Health Complex. Thanks to the philanthropic support of our donors, we have completely reimagined this central space to ensure patients, visitors and staff feel supported from the moment they walk through our doors. This new humanistic space combines admissions, information, education, art and wellness, healthy eating and spirituality. As the gateway to our hospital, it is a metaphor for progress, creativity and expanding our horizons and supports better patient care, and a better work place.

Renew Sinai is a joint initiative between the Province of Ontario through Infrastructure Ontario and Sinai Health System, and will be supported by a major fundraising campaign. To date Sinai Health Foundation has surpassed the half-way mark of its \$500 million goal to Renew Sinai.



Mount Sinai Hospital Joseph and Wolf Lebovic Health Complex

The drive to innovate more impactful and effective models of care is felt by each and every one of our clinicians. Nurses, physicians, social workers and physiotherapists are just a few of the extraordinary clinicians who work together, inter-professionally to develop new professional practice and care pathways that improve patient outcomes. Empowering staff to collaboratively reimagine how we deliver care means that we can harness their passion and commitment to do even better for our patients, as a team.



The heart of health care

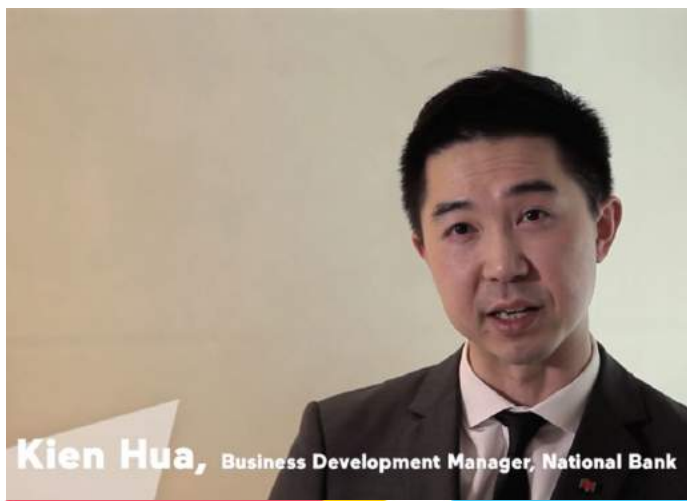
Across Sinai Health System there is a collective passion and commitment that drives us to achieve new heights of excellence. Working in inter-professional teams, we draw upon a slate of expertise to ensure the best care.

When Trisha Young, RN, cares for some of our tiniest and most fragile patients in the Newton Glassman Charitable Foundation Neonatal Intensive Care Unit (NICU), she knows she's never alone. Always ready to support her is a group of more than 1,500 passionate nurses and a comprehensive team of interprofessional experts, including physicians, pharmacists, nutritionists, respiratory therapists and social workers, to name a few. Together, they are united in the belief that great care happens when all health-care providers are connected.

Last year, Mount Sinai became the first hospital in Canada to achieve Magnet®, a prestigious, international credential that recognizes nursing excellence and outstanding patient care. A core component of the designation is ensuring nurses can partner with patients and families, communities and their interprofessional colleagues to impact positive outcomes. This results in a stronger care delivery system that ensures patients and families receive high-quality and consistent care across all disciplines.

"Magnet is all about putting the right structures and processes in place to ensure nurses are working at the full scope of their role, and functioning at the highest level of their practice," says Jane Merkley, Executive Vice-President of Patient Care, Quality and Chief Nurse Executive at Sinai Health System.

To this end, the Magnet® designation empowers our nurses to assume leadership roles in interdisciplinary collaboration; as a result, nurses become pioneers in innovating new models of care and best practices. For example, Trisha recently devised a new, single-person approach to help nurses more efficiently change the central lines that so many NICU babies rely on for fluids, nutrition and medication, while ensuring the sterility of the intravenous tubing. These lines, which require changing every 24 hours, are often in place for several weeks, so sterility is crucial to preventing infection.



Kien Hua, Business Development Manager, National Bank

Community Support:

National Bank supports research and care for a healthy and prosperous society.

National Bank is committed to promoting the well-being of the communities it serves. At Mount Sinai, they have supported nursing and have been proud to do so given that Mount Sinai Hospital is the first hospital in Canada to receive Magnet® status for nursing excellence and outstanding patient care. They also support Venture Sinai because research is a crucial to health care, but also because they believe that innovation is fundamental to community development.

Trisha also developed an education plan – complete with handouts, a video and a mobile training unit – to train other Glassman NICU nurses in the new technique. Earlier this year, she presented the technique at the national Evidence-based Practice for Improving Quality (EPIQ) Conference, ensuring her innovation will have an impact on NICU patients in other hospitals as well.

“The NICU program is a great example of how nurses are coaching and supporting parents, so they leave the Hospital feeling empowered instead of scared and vulnerable. It moves from an illness paradigm of nursing to a wellness model,” says Jane.

“Nurses play such a vital role at the Hospital,” adds Trisha. “We are there for 12 hours a shift, day and night, and we are the voices of our tiny patients. We truly have a heart for the families as they go through this journey. We’re the ones parents lean on for support, we’re the ones they cry on for comfort, we’re there to celebrate little triumphs and victories. We’re there for their whole journey, and it’s a lifetime of memories for them.”



28,809
admissions/yr



62,793
emergency visits/yr



1,239
nurses



4,524
total staff



FIRST EVER
Canadian acute care
hospital to make
geriatrics a priority



7,337 births/yr
largest women's &
infants' program in the
country



FIRST
Magnet® hospital in
Canada



323
physicians



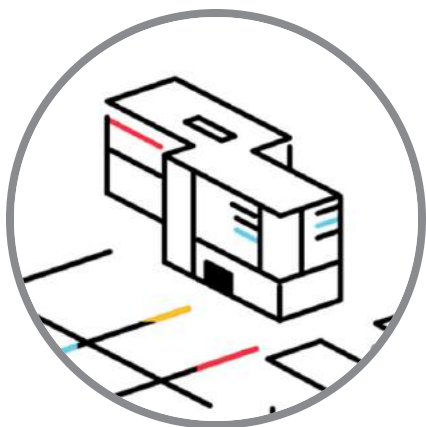
418
total beds



Mount Sinai Hospital leads the way in innovating care for older adults

This year, Mount Sinai Hospital established groundbreaking new partnerships that will bring the benefits of our Acute Care for Elders (ACE) Strategy to more Canadians than ever before. A new collaborative effort between Sinai Health System, the Canadian Foundation for Healthcare Improvement (CFHI) and the Canadian Frailty Network, is helping to spread our innovative ACE program across Canada and abroad. We have also partnered with Ryerson University, the City of Toronto, Ontario Gerontology Association and the International Federation on Ageing to launch a new National Institute on Ageing (NIA). The NIA will focus on practitioner-oriented research, innovation and education to advance knowledge and inform policy related to the four pillars outlined in the National Seniors Strategy.

Spearheaded by Dr. Samir Sinha, Director of Geriatrics and Peter and Shelagh Godsoe Chair in Geriatrics, this partnership will help Sinai Health System achieve its commitment to expanding research related to healthy aging and the more effective delivery of healthcare services for older and complex populations.



Bridgepoint Active Healthcare

Active Healthcare is not just a name, it's a philosophy. Today people are living with complex health conditions – affecting not only their body but the entire fabric of their lives. Over the last decade, we have put an entirely new model of health care into action, one that places the patient at the centre of their own care universe, family and friends included. We call this active health care.



Helping stroke patients return home

All his life, Duncan Skinner has liked to dance. So much so, that when Duncan retired in the spring of 2015, he had only two goals in mind for retirement: visit his eldest daughter more often and do more Scottish country dancing with his wife Carole. But the couple's plans were waylaid when, in the first week of December, Duncan started to feel "funny."

Duncan had suffered a progressive stroke, a rarer form of stroke in which symptoms develop gradually and worsen over time.

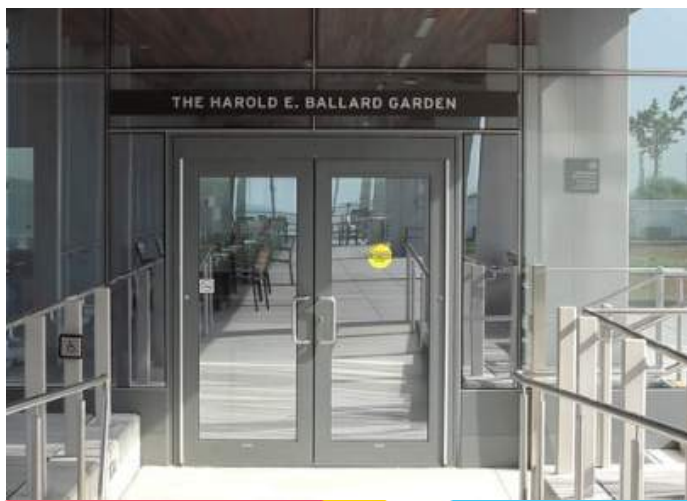
Before his stroke, Duncan was fit and used to being active. But when he arrived in the inpatient stroke unit at Bridgepoint Active Healthcare, it was on a gurney. He was unable to move his right hand and had only limited motion and feeling in his right arm and leg. He also struggled with swallowing and was restricted to a pureed diet.

A leading cause of adult disability in Canada, stroke is becoming more common as people develop risk factors like hypertension and diabetes earlier in life and live longer with these conditions. The losses in physical, cognitive or emotional function that patients can experience after a stroke can range from mild to severely

life-altering. These variations make stroke treatment complex and highly individual.

At Bridgepoint, Duncan entered the care of Dr. Heather MacNeill, a stroke physiatrist. She looks at a patient's whole system of function and assesses which physical, cognitive and emotional skills have been diminished by stroke. Working in tandem with the interdisciplinary care team, they develop a treatment plan that restores as much lost function as possible.

"Many people tend to think of rehab as a last resort," says Dr. MacNeill, "but it is actually a very powerful therapy just like medication would be. There's a frequency, a dosage and a response we look for that lets us know if the therapy is working and to what extent."



Community Support:

Harold E. Ballard Foundation is growing a legacy for years to come.

Some of Mary-Elizabeth Flynn's fondest memories are with her family in the garden. When it came time to make a gift to Bridgepoint that would respect her father's wishes, a greenspace was the perfect fit. The Harold E. Ballard Foundation Rooftop Garden is located on the 10th floor and is a place where patients and families can enjoy some quality time while experiencing unparalleled views of the Toronto skyline.

Patients like Duncan benefit from the expertise of a whole cadre of specialists who collaborate closely to deliver coordinated care designed around patients' goals. Every patient is cared for by an interprofessional team that may include: specialist and primary care physicians, nurses, physiotherapists, occupational therapists, pharmacists, speech language pathologists, dietitians, social workers, recreation therapists and spiritual care professionals.

Bridgepoint's stroke rehabilitation program, awarded Stroke Distinction status in 2015 from Accreditation Canada for the second time, is a team-driven care model that puts the patients' goals front and centre.

"My recovery has been rapid, but the therapy is aggressive," says Duncan. "They practice 'tough love'. When you demonstrate even the slightest ability, they give you something new to do. They push and push and push to get you to be as independent as possible."

Duncan and his wife were astonished by the speed of his progress since December 8th. "My wife had a hard time keeping up," says Duncan. "She was expecting the worst – that I'd be in a wheelchair for the rest of my life. And by New Year's Eve I was walking without a cane."

His stroke has changed his timeline, but not his retirement goals. In May, Duncan and his wife enjoyed a visit to their daughter and her family in Arizona. Next up: a triumphant return to Scottish country dancing.



2,480
admissions/yr



85,000
hours of patient
programming



19,248
outpatient visits/yr



11
average amount of
disciplines per
interprofessional
patient care team



18
design awards



FIRST EVER
purpose-built hospital
for complex patients



414
total beds



**#1 PATIENT
CHOICE**
in rehab and complex
care



1,100
total staff

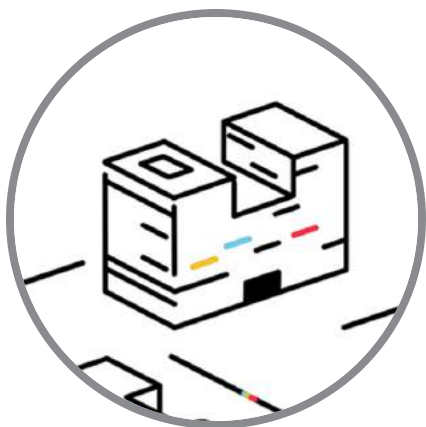


A healing walk, building wellness and community

When physiatrist Dr. Kim Coros started her role at Bridgepoint, she saw an opportunity to marry her passion for exercise with the state-of-the-art hospital. She wondered, "How can we get patients to be more active and feel more connected to the community?" That question began a pilot walking program for patients. The weekly Walk and Roll program lasts about 30 minutes and members travel to different areas of the hospital.

"When the program first started, I thought it was going to be all about the exercise," remarked Dr. Coros. "But what has been fascinating is to watch the community build, and it's the social aspects that bring participants back."

A recent participant in the program, George Koss was struck by the impact the social aspects had on him. "My favourite part is the socialization with the physical activity," he says. You get to hear different stories and perspectives." The goal is to expand the program to other areas of the hospital, and eventually the community. "One day," says Dr. Coros. "I see patients, staff and members of the surrounding community all walking together."



Lunenfeld-Tanenbaum Research Institute

Recognized as one of the leading biomedical research facilities in the world, the Lunenfeld-Tanenbaum Research Institute has been advancing the understanding of human biology in health and disease for more than 30 years.



The World's Best

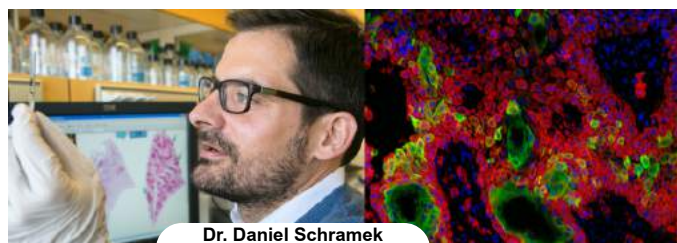
The Lunenfeld-Tanenbaum Research Institute is a magnet for recruiting world renowned scientists. These pioneers are making discoveries that are resulting in new and better ways to prevent, diagnose and treat common illnesses to build a healthier future for Canadians, and indeed the world.

This year **Dr. Graham Collingridge** was awarded the world's top Brain Prize. Awarded by the Grete Lundbeck European Brain Research Foundation in Denmark, the prize recognizes Dr. Collingridge's insights into the molecular mechanisms of memory. Dr. Collingridge's focus is on a process that underpins the life-long plasticity of the brain, enabling us to learn, remember and forget. His discoveries have greatly impacted the understanding of the healthy brain, as well as helped efforts to treat diseases such as Alzheimer's. His ground breaking work has contributed to the only current medication shown to slow down the progression of the disease, albeit only temporarily.



Dr. Graham Collingridge

Dr. Daniel Schramek joined the Lunenfeld-Tanenbaum Research Institute in 2015 and was named the Kierans/Janigan Cancer Research Scientist. Dr. Schramek was selected from over 250 applicants and his vision is to find new ways to identify novel genes associated with cancer using high throughput technologies he developed at the Rockefeller University. Dr. Schramek has been awarded a Canada Research Chair, external funds for his specialized equipment and secured two highly competitive international research grants.



Dr. Daniel Schramek

Imagine if we could correct genetic errors inside diseased organs and return them to health? Gene editing, a process by which inherited mutations can be corrected, has become possible, but has only worked so far in cells that are dividing, which are scarce. Now a team led by **Dr. Daniel Durocher** has discovered a way to perform this kind of precise gene editing in non-dividing, fully differentiated cell types. The study was published this year in the acclaimed journal Nature. To add to his many accomplishments, Dr. Durocher was named a recipient of the highly competitive and prestigious 2015 Paul Marks Prize for Cancer Research by Memorial Sloan Kettering Hospital in New York.



Dr. Daniel Durocher



Community Support:

Our annual Dinner with Scientists gala celebrated over 30 years of innovation and excellence at the Lunenfeld-Tanenbaum Research Institute. Sponsored by PearTree Financial, over 550 guests from the scientific and philanthropic communities came together at The Carlu on November 16, 2015 for an evening of curiosity and possibility, raising an incredible \$1.1 million for research. CNN Chief Medical Correspondent and neurosurgeon Dr. Sanjay Gupta spoke and the evening was hosted by Alison Vuchnich from Global News. Special thanks to our Tribute Committee led by Jack Curtin, Tom Kierans and Jeff Rosenthal and our Organizing Committee led by Bill Arvanitis and Jamie Grossman.

As Director of the Canadian Neonatal Network, which brings together 30 Neonatal Intensive Care Units (NICUs) from across the country, **Dr. Prakesh Shah** is a leader in measuring and improving the health and quality of care provided to vulnerable preterm and sick babies in the NICU. With the success of his work across Canada, Dr. Shah has expanded his efforts on a global scale by launching the International Network to Evaluate Outcomes, with 10 other countries which will allow clinicians to study data from over 260 NICUs around the world. A gathering of international paediatricians was held at Mount Sinai Hospital in December and they had the opportunity to visit the hospital's new Glassman NICU, where Dr. Shah cares for some of the GTA's most vulnerable babies.



Dr. Prakesh Shah



350

scientists, clinician
scientists and research
trainees



1,500

research grants held



680

primary research
publications



#1

in CIHR Foundation
grants awarded in
Canada



183,000

sq. ft. of research
space



357

new clinical research
projects



TOP 10

Among the TOP 10
biomedical research
institutes in North
America



757

total staff



Highest impact in
diabetes research of
any research institute.

Responding to our changing population

The Lunenfeld-Tanenbaum Research Institute added a fourth research pillar this past year focused on health systems research, population health services and solutions. As a result of the formation of Sinai Health System, LTRI was able to leverage the expertise in the Bridgepoint Research Collaboratory.

“Sinai Health System is founded on the idea that bringing together different parts of the health care spectrum will improve the patient experience and care,” said Dr. Ross Upshur, Assistant Director, Lunenfeld-Tanenbaum Research Institute, and Director, Collaboratory for Research and Innovation. “The Collaboratory’s research explores the gaps that we need to fill, providing critical insights that will ultimately help us build a stronger system. Our vision is to establish a health services pillar that is as successful and flourishing as the LTRI’s basic science pillar.”





Circle of Care

It truly is good to be home. Whether it's community programs, helping clients at home or supporting care givers, we are simplifying day-to-day life for our clients so they can maintain their independence.



Connecting care to home

Rosie Balaquaio spends her days helping clients with tasks that most of us take for granted: getting out of bed, bathing, eating and going for a walk. Yet, as simple as these tasks may seem, her assistance is life changing by helping people preserve their independence.

Rosie's day begins before the sun comes up so that she can arrive at a client's home and help them start their day. With a signature smile that instantly triggers eyes to light up and conversation to flow, it's clear that Rosie is more than simply a Personal Support Worker, but a critical connection point in care.

With over 800 Personal Support Workers (PSWs) like Rosie on staff, and a group of 450 dedicated volunteers, Circle of Care is helping to simplify everyday life for more than 13,000 clients across the GTA each year. Through in-home consultations, customized care plans, regular home visits, access to 24-hour emergency response and referrals to other health-care programs, clients have access to the kind of support that will help improve their quality of life, and families have peace of mind that their loved ones are being well cared for.

For Rosie her clients' needs range from reduced mobility to vision and hearing loss, to cognitive decline. "I know they appreciate my help with the day-to-day tasks, but it's also about companionship,"

said Rosie. "Recently, a client requested that I spend the entire day with her. When I asked why, she said 'Because I like talking to you!'"

While assisting clients to bathe and get dressed is her primary function, respect and compassion are the guideposts to care. It's by building a connection that someone like Rosie can make a deep and lasting impact.

"Some days the simple act of helping a woman put on jewelry or lipstick can have a huge effect on people who have trouble taking care of themselves," Rosie says. "On other days, knowing when to speak in a soothing voice and giving some space can defuse tension when people are feeling frustrated or discouraged."

"We know one of the best things you can do for people is help them keep their independence," said Carey Lucki, Interim President, Circle of Care. "The work that Rosie and our entire



Community Support: Wednesday with Lolly

After the passing of his late wife, Lolly, Lorne Propas was looking for a special way to honour her memory. When he considered the special relationship Lolly had with her hospice volunteer toward the end of her life, the idea of Wednesday with Lolly was born. The annual event serves to recognize Circle of Care's Hospice Volunteers and Friendly Visiting Volunteers for their special contributions, dedication and support. Attendees also participate in an educational session meant to enhance their interactions with clients, such as incorporating alternative healing methods like Reiki and Pet Therapy.

team at Circle of Care does is critical to helping people live healthy lives, while still being part of an integrated system."

For Rosie, when a client says at the end of a visit, "I'd like to spend time with you again," there's simply no better validation for how she spends her days.



13,292
clients



449
volunteers



158,098
meals delivered



24
languages spoken



902
total staff



180,481
client calls received



894,886
hours of personal
support



94,430
rides for seniors



1,400
Holocaust survivors
assisted

Building bench strength across the continuum

Forging stronger connections between patients and caregivers is at the heart of Sinai Health System's goal of creating a seamless continuum of care. Our roster of experts reaches across all areas from research to acute care to rehabilitative care to home care. Work is underway to help us further leverage this expertise to help those who need it most.

Dr. Samir Sinha, Director of Geriatrics, Peter and Shelagh Godsoe Chair in Geriatrics and the new Chief Clinical Officer for Circle of Care; Dr. Moly Leszcz, Psychiatrist-in-Chief; and Dr. Joel Sadavoy, Director of the Cyril & Dorothy, Joel & Jill Reitman Centre for Alzheimer's Support and Training, are working to uncover opportunities for enhancing geriatric and mental health services available to Circle of Care clients and their families. Likewise, Circle of Care's community programs are reaching more inpatients and outpatients at Mount Sinai and Bridgepoint and helping to support their transition back home and toward living more independently in the community.





SINAI HEALTH SYSTEM BOARD OF DIRECTORS

Chair of the Board

Jay S. Hennick

Vice Chair

David Denison, O.C.

Secretary

Joseph Mapa

Members

Brent Belzberg
Paula Blackstien-Hirsch
Lawrence S. Bloomberg, C.M., O. Ont.
Peter F. Cohen
Gail Cook-Bennett, C.M.
The Hon. Linda Frum, Senator

Paul Gallagher
Bernard I. Ghert, C.M.
Ira Gluskin
Debbie Kimel
Joseph Lebovic
David Leith

Stephen M. Pustil
Philip Reichmann
Heather Reisman, C.M.
Joel Reitman
Robert A. Rubinoff
Mark S. Saunders

Honey Sherman
Edward Sonshine, O. Ont., Q.C.
Lawrence M. Tanenbaum, O.C.
Charles M. Winograd
Mark D. Wiseman

Ex-Officio Voting Members

Allan Rudolph, CPA, CA
Dr. L. Trevor Young, MD, PhD, FRCPC

Emeritus Director Non-Voting Member

The Rt. Hon. John N. Turner, P.C., C.C., Q.C.

Ex-Officio Directors

Joseph Mapa
President and CEO

Dr. Rita Kandel
Chair, Medical Advisory Committee

Jane Merkley
Executive Vice President
Patient Care and
Chief Nursing Executive

Dr. Mirek Otremba
President, Professional Staff
Association

Sinai Health System Executive Team

Joseph Mapa
Marian Walsh
Kevin Goldthorp

Chief Executive Officer, Sinai Health System
Associate CEO & Chief Transformation Officer, Sinai Health System
Chief Executive Officer, Sinai Health Foundation and
Executive Vice President, Advancement & Marketing, Sinai Health System
EVP, Patient Care, Quality and Chief Nurse Executive, Sinai Health System
Chief Medical Strategy Officer, Sinai Health System
EVP, Academic & Medical Affairs, Sinai Health System
EVP, Finance (CFO) & Chief Operations Officer, Sinai Health System
Director, Lunenfeld-Tanenbaum Research Institute

Jane Merkley
Dr. Gary Newton
Dr. Maureen Shandling
Joan Sproul
Dr. Jim Woodgett



**Sinai
Health
Foundation**

SINAI HEALTH FOUNDATION BOARD OF DIRECTORS

Chair and President

Brent S. Belzberg

Immediate Past Chair

Jay S. Hennick

Vice-Chairs

Maxwell Gotlieb

David Leith

Richard Pilosof

Jeffrey L. Rosenthal

Past Chair

Robert A. Rubinoff

Secretary

Les Viner

Treasurer

Richard M. Cooper

Assistant Treasurer

David Kaufman

CEO, Sinai Health Foundation and Executive Vice President, Advancement & Marketing, Sinai Health System

Kevin R. Goldthorp

Directors

Peter Aceto

Kenny Albert

Gordon Bogden

Denys Calvin

Anthony J. Cohen

Camille Dan

Mark Davis

Daniel Debow

Laura Dottori-Attanasio

Lisa Draper

Gary S. Fogler

Richard Fogler

Karen Fonn

Fern Glowinsky

Graham Gow

Carole Grafstein, C.M.

Ronnen Harary

Alan R. Hibben

Ian Kady

Thomas Kornya

Joseph Lebovic

Fred A. Litwin

R.S. (Butch) Mandel

Mark Mandelbaum

Salim Manji

Steve Mayer

Douglas McPhie

Shawn Mecklinger

Stephen Miller

Janice O'Born

Zippy Orland

Andrew G. Phillips

Jonathan Pollack

Dani Reiss

John Rothschild

Jordan Sarick

Thomas S. Schwartz

John Sherrington

Ken Tanenbaum

Richard E. Venn

Jack Winberg

Ex-Officio

Gail Cook-Bennett, C.M.

Barbara Hania

Thomas E. Kierans, O.C.

Mitchell Kunin

Joseph Mapa

Lawrence M. Tanenbaum, O.C.

Sinai Health Foundation Executive Team

Terry Caputo

Allen Davidov

Susan Davis

Tony diCosmo

Amy Lau

Vice President and Chief Financial Officer

Vice President, Marketing and Events

Senior Director, Governance and Corporate Compliance

Vice President, Donor Relations

Director, Campaigns

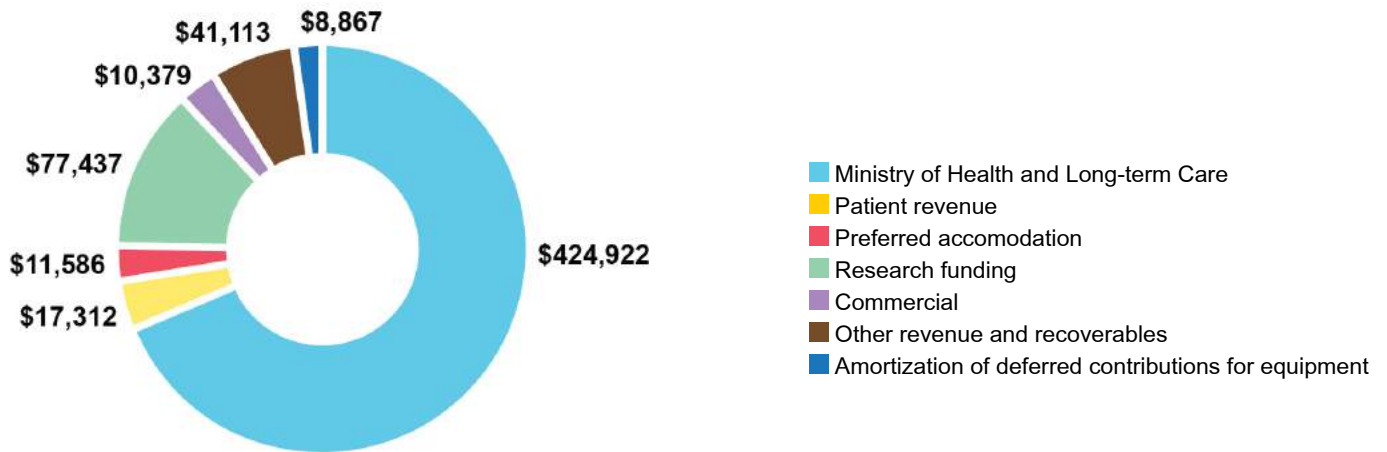


Our Financials

The following charts show the distribution of revenue and expenses for Sinai Health System for 2015/16. Audited financial statements are available on our website.

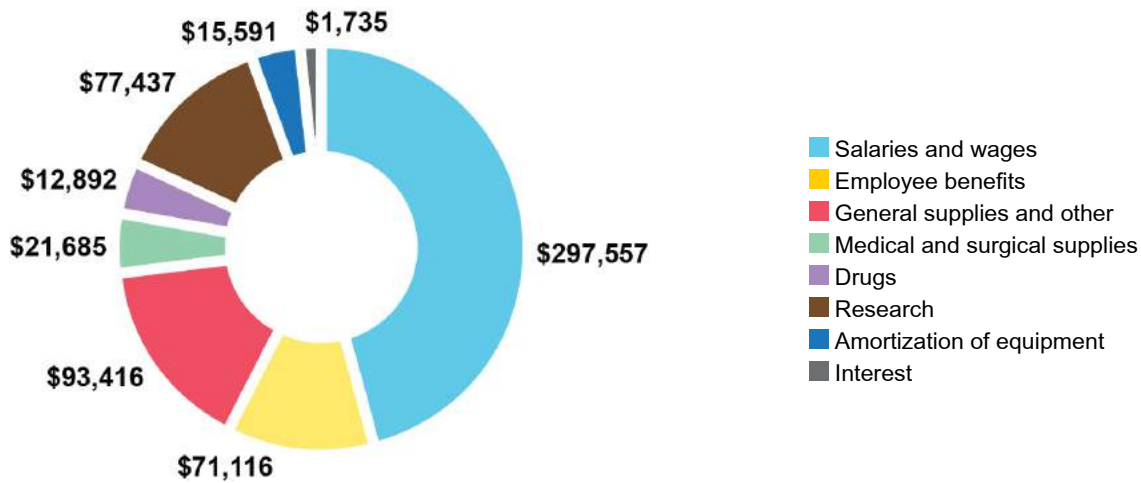
Income (\$000's)

(For the year ended March 31, 2016)



Expenses (\$000's)

(For the year ended March 31, 2016)

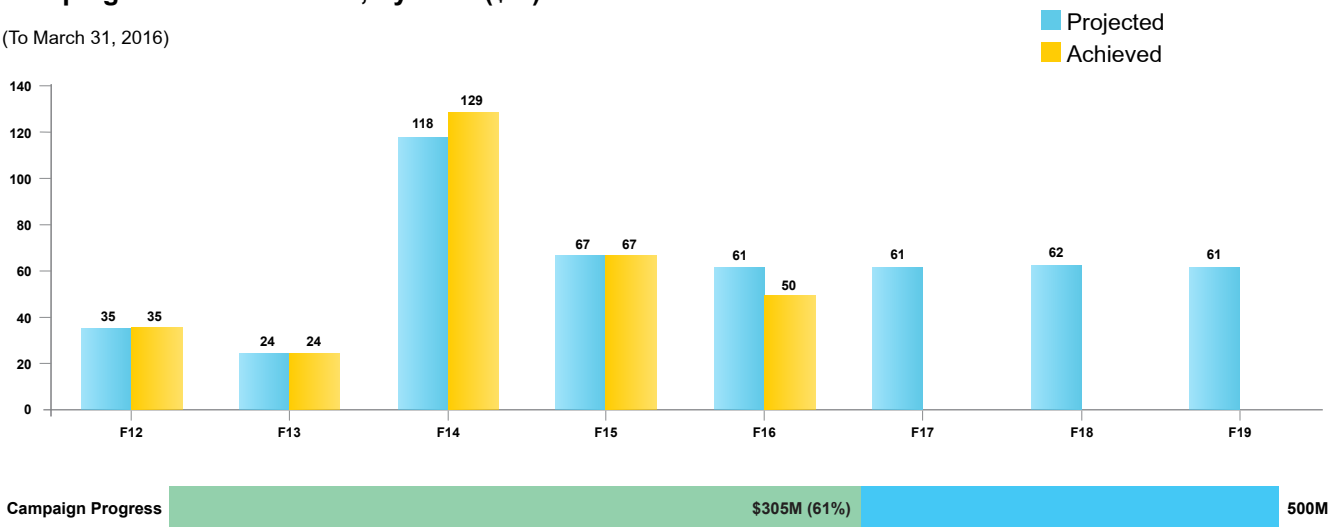




The following financials highlight our campaign goals and revenue and also gives an overview of our endowment activity for the last fiscal year.

Campaign Raised Revenue, by Year (\$M)

(To March 31, 2016)



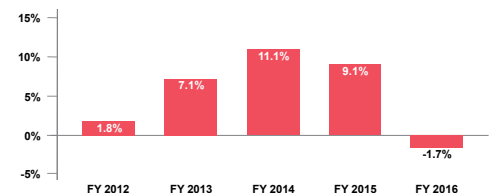
Endowments

Endowments play an instrumental role by providing long-term investment with lasting impact. The Sinai Health System Investment Committee recommends to the Sinai Health System Board Of Directors how to best safeguard and grow invested assets.

Sinai Health Foundation Asset Allocation at Market Value as at March 31, 2016 (CDN \$ '000s)

Endowment Fund Investments	Cash Equivalent	Bonds	CDN Equities	US Equities	Alternative Strategies	Mar 31, 2016 Total
Total Amount	3,114	27,523	11,743	23,135	22,956	88,471
% of Portfolio	3.50%	31.10%	13.30%	26.10%	26.00%	
Managers		PH&N Barometer State of Israel	C.A. Delaney Barometer Pembroke	C.A. Delaney Barometer iShares Pembroke Scotiabank	HarbourEdge Polar Securities UBS (Millennium, Altas)	

Portfolio Returns (Investment Returns – Endowments)



The average return over the past five years has been approximately 5.6%

"The investment environment saw much volatility due to slow economic growth, tumbling commodity prices and a weak Canadian Dollar. The diversification within the portfolio acted as a buffer against volatility and resulted in us ending the year with a modest loss."

— Richard Pilosof, Chair, Investment Committee and Vice-Chair, Board of Directors, Sinai Health Foundation.



How our community is driving connected care

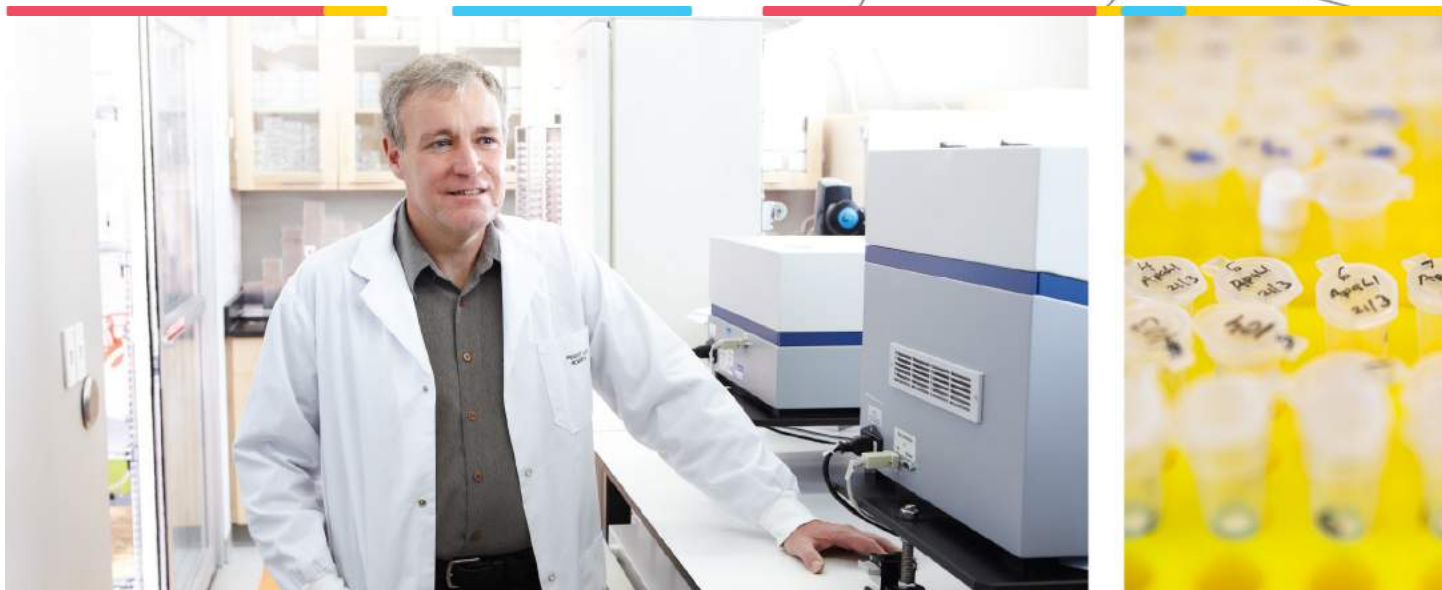
With the support of our donor community, we have achieved some incredible accomplishments this past year. From supporting a national aging strategy to advancing research into some of the most-pressing health issues like diabetes and cancer, we are connecting people to the type of care that addresses their broader needs.

We rolled out an Acute Care for Elders (ACE) Strategy that is now being recognized by Canada's federal Minister of Health and is being modelled and rolled out throughout 17 hospitals in Canada and one in Iceland. This is an incredible leap forward in Sinai Health System's approach to addressing the needs of our older patients through this innovative ACE Collaborative. Transformation is fueled by philanthropic leaders like **Bob Rubinoff, Ben & Hilda Katz Charitable Foundation**

and **Peter and Shelagh Godsoe** who have been committed to ensuring that elder care remains a priority.

We are expanding our Schwartz/Reisman Emergency Centre To meet the growing need for our emergency services, Howard Sokolowski and board member Linda Frum made a landmark investment of over \$5 million to double the size of our Schwartz/Reisman Emergency Centre.





The Sokolowski/Frum Reception, Triage and Waiting Area, featuring a patient and family-centred design, will be the first touch point into the new emergency department where more than 60,000 people receive care each year. A portion of the gift will also support the Schwartz/Reisman Emergency Medicine Institute – the first of its kind in North America – which will continue to propel research, education and policy development in the field of emergency medicine.

We are finding new ways to prevent diabetes

Thanks to a generous \$4.15 million gift from **Boehringer Ingelheim (Canada) Ltd.**, world-renowned diabetes researcher Dr. Bernard Zinman, Director of the Leadership Sinai Centre for Diabetes at Mount Sinai Hospital, **Sam and Judy Pencer Family Chair in Diabetes Research** and **Stephen and Suzie Pustil Diabetes Research Scientist**, along with his research collaborators, are working together to find biomarkers that will predict who will get diabetes long before the disease manifests. Their goal is to bring new and better therapeutics and interventions to those who are suffering from, or about to develop, the disease.

We are gaining a deeper insight into the mechanisms of cancer

Building on their longstanding support of research and infrastructure at the Lunenfeld-Tanenbaum Research Institute, a new \$1.5 million gift from the **Krembil Foundation** is supporting the work of

cutting-edge cancer researchers. In the Krembil Genomics Laboratory, Dr. Rod Bremner's research in retinoblastoma examines how cancer's mechanisms escape detection by the immune system, while Dr. Jeff Wrana, **CIBC Breast Cancer Research Scientist** and the **Mary Janigan Research Chair in Molecular Cancer Therapeutics**, is leading a major study examining the genomics of cancer metastasis. With nearly 200,000 Canadians diagnosed with cancer every year, these studies will be crucial for exposing new targets for cancer treatments, as well as the design and implementation of new strategies that improve the success of anti-cancer therapeutics.

We received an incredible \$1 million legacy gift in support of research

Mr. Peter Ziegler, who passed away at Mount Sinai Hospital in March 2015 in his 93rd year, donated \$1 million to the Lunenfeld-Tanenbaum Research Institute. After tragically losing his parents and sister in the Holocaust, he came to Canada and worked as a biochemist for 32 years. By living frugally and saving throughout his entire life, he was able to leave behind an extraordinary legacy that will drive future discoveries in health-care research.



Sinai
Health
Foundation



Sinai Fund

Supporting the most urgent needs of the hospital.

Last year, more than 10,000 donors generously contributed over \$6 million to the Sinai Fund, a critical source of donations supporting our highest priority needs. The Fund plays an important role in providing assistance where it is needed most, from equipment and research to training and education. Every dollar makes a difference in providing exceptional care, fueling discoveries and educating the best and brightest medical and scientific minds.

At Sinai Health System, the Sinai Fund supports things like:



38

pet therapy dogs



57

languages in which
translation services are
offered



240

research fellows and
students



2000

meals provided through
mealtime assistance
programs



Research into a new
biomarker that helps
identify a woman's risk
of diabetes after
pregnancy



Research to improve
stroke rehab for
patients with multiple
conditions



Wi-Fi network



Laboratory equipment



Medical imaging
equipment



"We are so grateful for Mount Sinai and the amazing care they provided to our grandson Sawyer, who was born premature. In honour of the wonderful staff, we have made a gift to the Sinai Fund as our way of saying thank you for all that you do."

— Diana and Ed McStay,
Sinai Fund donors



Our Events

This year we rocked, we curled, we sparkled, we rode and we danced all in support of Sinai.

Last year, 35 events were held in support of Sinai Health System, raising an incredible \$5.7 million. From bake sales to golf tournaments to galas, every event is crucial to support exceptional care in hospital, community and home, to help patients with the greatest health needs. These events are not possible without the generosity and support of event organizers, attendees, donors and volunteers.

32Smiles
Asset Management Hold em' For Life
Auxiliary Tea
Auxiliary Theatre Day
Bang & Olufson Yorkville Run
Brooms Up! Curl for a Cause
Cherished Creations
Da Vinci Gala
Dinner with Scientists
Golf Classic
Go! Black Tie Monopoly
Guys Night Out
Harry Barberian Memorial Dinner
Hero Ride
Kate Spade Event

Katie's Journey
Let's Nach!
Levac Attack
Liv, Love, Lyrics
Miles for Miracles
New York City CEO Event
Oakdale Golf Fore a Cure
Oakdale Knudson Pro-Am
Oakdale Women's Opening Luncheon
Our Wings to Fight Gala
Pump it for Preemies
Real Estate Hold'em for Life
Remember Film Screening
Rock N'Stroll
Samantha Flannigan Memorial Golf Tournament
Scotiabank Marathon
Sinai Soiree
Summer Social
The Gala in support of the Panov Program
The Great Jewellery Heist

"We are incredibly grateful for the community support around all of our signature and community events. Funds raised from these events truly make a difference in the lives of patients and families that rely on Sinai Health System for their spectrum of care."

— Kevin Goldthorp, CEO, Sinai Health Foundation



Da Vinci Gala



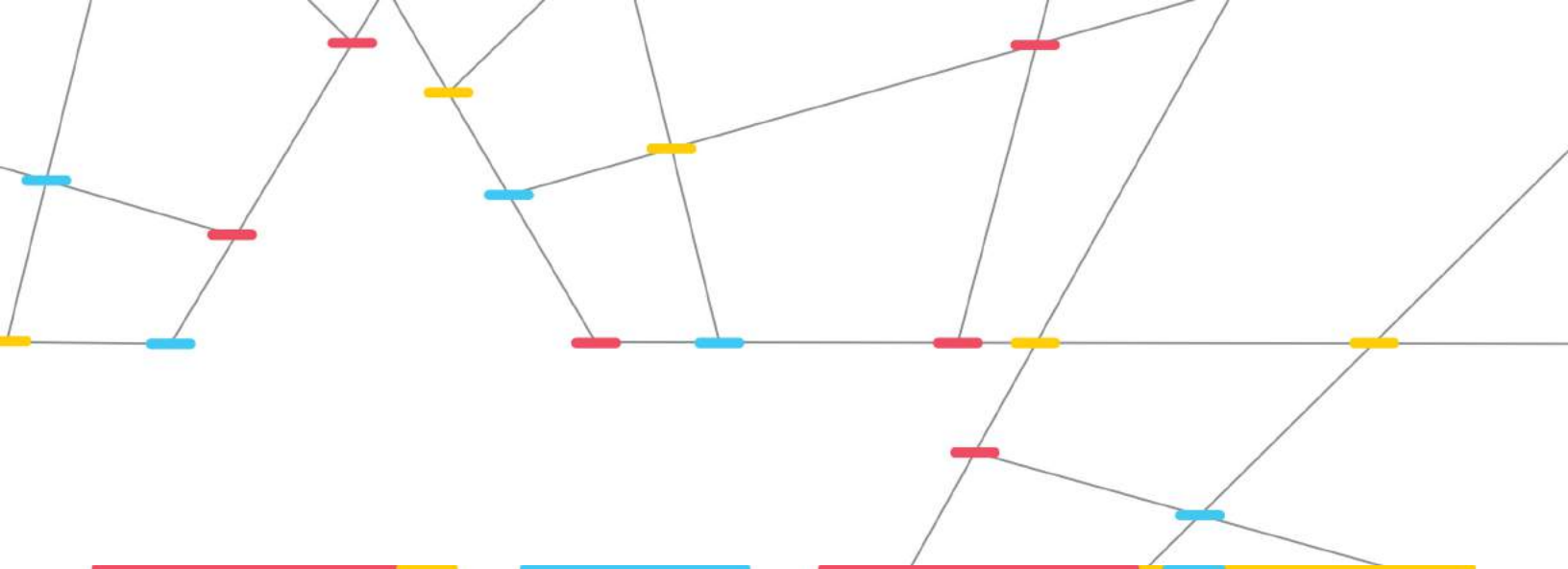
Levac Attack



Future Sinai's Sinai Soiree



Let's Nach!



Golf Classic



Asset Management Hold em' for Life



Dinner with Scientists



Rock N' Stroll



Leadership Sinai's Kate Spade Event



Samantha Flannigan Memorial Golf Tournament

Thank you to our visionary donors for their lifetime commitment to Mount Sinai.

This list represents donors whose cumulative lifetime commitments total more than \$1 million as of March 31, 2016.

\$50M+

The Joseph and Wolf Lebovic Charitable Foundations

\$20M - \$49.99M

Warren & Debbie Kimel and Ron & Vanessa Kimel

The Samuel Lunenfeld Charitable Foundation

Mount Sinai Hospital Auxiliary

Gerald Schwartz & Heather Reisman

Isadore & Rosalie Sharp

Larry & Judy Tanenbaum

\$10M - \$19.99M

Lawrence & Frances Bloomberg

Ira Gluskin & Maxine Granovsky Gluskin

Katz Group Canada Inc.

Murray & Marvella Koffler

Albert and Temmy Latner Family Foundation

The R. Samuel McLaughlin Foundation

Miles & Kelly Nadal and Family

Bernard & Honey Sherman

The Slaughter Family Foundation

\$5M - \$9.99M

Sydney & Florence Cooper and Family

John & Myrna Daniels

Phillip & Peggy DeZwirek

Ken & Rachel Flood

Estate of Louis Frieberg

Newton Glassman Charitable Foundation

The Peter and Shelagh Godsoe Family Foundation

Jay & Barbara Hennick and Family

Krembil Foundation

The Reichmann Family

RioCan Real Estate Investment Trust

Robert Rubinoff

Scotiabank

Howard Sokolowski & Linda Frum

\$2.5M - \$4.99M

Brent & Lynn Belzberg

Estate of Benjamin Herbert Birstein

BMO Financial Group

Boehringer Ingelheim

CIBC

Ricky & Peter Cohen and Lillian z"l & Jack Stupp z"l

David & Stacey Cynamon

David, Mark, Robert, Zev and Peter Daniels

Ira & Irving Gerstein

The B.I. Ghert Family Foundation

Heart & Stroke Foundation

Hold'em for Life Charity Challenge

Kenair Apartments Ltd. /Ken & Helen Rotenberg

Thomas E. Kierans & Mary L. Janigan

The Fred A. Litwin Family Foundation

Rebecca MacDonald

The Pilosof Family

Ellen & Martin Prosserman and Family

RBC Foundation

The Seymour Schulich Foundation

Alex Shnaider

Peter A. Silverman, Q.C.

TD Bank Group

Variety - The Children's Charity

John & Josie Watson

Anonymous

\$1M - \$2.49M

Estate of Helen Babad

Bayer Healthcare

Esther & Henry Bernick

Bruce & Betty Birmingham

Estate of Benjamin Herbert Birstein

Geoffrey Bledin

Michael Bregman & Yetta Bregman and Family

Joseph Burnett

C.A. Delaney Capital Management Ltd.

CDF Foundation

Morey & Jennifer Chaplick

ConDrain, Alfredo, Angelo & Antonio DeGasperi Families

The Dan Family

Camille Dan Family

The Drimmer Family

Element Financial Corporation

Goldie Feldman

Kenny Field and Vivian Berman

Morgan Firestone Foundation

A & B Fogel Foundation



“Sorel’s inspirational gift was the catalyst to re-imagining the entire lobby area of the hospital.”

***Jay Hennick
Chair, Board of Directors,
Sinai Health System***

Patricia & Richard Fogler
George & Judy Frankfort
Sydney G. Frankfort
The DH Gales Family Charitable Foundation of Toronto
The Frank Gerstein Charitable Foundation
Sam Gertner and Family
Michael & Libby Goldgrub
Lorne & Carol Goldstein
Ned Goodman Family
Al & Malka Green
The Miriam & Harold Green Family Foundation
Grundleger Family
The Hanson Family
The Harweg Foundation
Helene Wollner Haynes & Peter Paul Haynes
George & Linda Heller
Kwok Yuen & Betty Ho
Howard Hughes Medical Institute
Dr. Jay Charitable Foundation
Jack & Buschie Kamin Foundation
The Ben and Hilda Katz Charitable Foundation
Bertha Kerbel
Shawn R. Kimel
The Kurtin Family
Christopher & Grace Kwong
Stephan & Sophie Lewar
Phil Lind and Family

Jeffrey & Beverly Lipson and Family
Magna International Inc.
In memory of Earl Mandell
George & Leta McCleary
Rob & Cheryl McEwen
Alan & Elise Mecklinger and Family,
Sheldon & Sema Mecklinger and Family
Carol Mitchell & Richard Venn
Mount Sinai Department of Obstetrics & Gynaecology
Mark & Natty Nashman
National Bank Financial Group
Oakdale George Knudson Pro-Am Golf Tournament
Zippora & Mark Orland
Nancy Pencer
Sam & Judy Pencer and Family
Pfizer Canada Inc.
The Posluns Family
Stephen & Suzie Pustil and Family
Anton & Ilana Rabie
Lea Reichmann
The Cyril & Dorothy, Joel & Jill Reitman Family Foundation
Melinda Rogers & Eric Hixon
Barrie D. Rose & Family
Albert Ross & Barbara Ross
In memory of Gerald & Norman Roth
Sage Investments Limited/Maxwell & Heather Gotlieb
Jamie & Sheryl Salter
The Savlov Family
Estate of Ruth Lynne Schacter
Thomas & Marjorie Schwartz
The Family of Helen Oelbaum Simpson
Ada Slaight
The Philip Smith Foundation
Edward & Fran Sonshine
Joseph & Mildred Sonshine Family
Max & Anne Tanenbaum
Moray & Joanne Tawse
Mark & Stephanie Valentine
Lionel & Sandra Waldman and Family
Marla & Larry Wasser
Jack & Anne Weinbaum
Welded Tube of Canada
Judy Wells
Marlene & Lewis Whiteson
Chuck & Libby Winograd
The Max and Beatrice Wolfe Charitable Foundation
The Ray D. Wolfe Family
Graham & Gale Wright
Estate of Peter Ziegler
Anonymous (8)

Thank you to our generous donors for the contributions they made this past year.



This list represents gifts and sponsorships made between April 1, 2015 and March 31, 2016.

** These donors have made new commitments of \$10,000 or more during this fiscal year.*

\$5M+

Howard Sokolowski & Linda Frum*

\$2.5M-\$4.99M

Boehringer Ingelheim (Canada) Ltd.*

The Joseph and Wolf Lebovic Charitable Foundations

\$1M-\$2.49M

David & Stacey Cynamon

Estate of Louis Frieberg*

Ira Gluskin & Maxine Granovsky Gluskin

Hold'em for Life Charity Challenge

Krembil Foundation*

The Kurtin Family*

Carol Mitchell & Richard Venn*

Oakdale George Knudson Pro-Am Golf Tournament*

Richard & Karen Pilosof*

Anton & Ilana Rabie*

Jamie & Sheryl Salter*

Gerald Schwartz & Heather Reisman

Scotiabank*

Isadore & Rosalie Sharp

The Family of Helen Oelbaum Simpson*

The Slight Family Foundation

The Jack Weinbaum Family Foundation*

Welded Tube of Canada*

Estate of Peter Ziegler*

\$500,000-\$999,999

Lawrence & Frances Bloomberg

Phillip & Peggy DeZwirek

Joe and Maria Di Geso*

Estate of Ivana Farrar*

Newton Glassman Charitable Foundation

The Peter and Shelagh Godsoe Family Foundation

Grundleger Family*

Katz Group Canada Inc.

The Kohn Family*

Philip B. Lind & Family*

George & Leta McCleary*

Miles & Kelly Nadal and Family

Anonymous*

\$250,000-\$499,999

Estate of Helen Babad

CDF Foundation

Michael Cooper, Krystal Koo and Family*

Sydney & Florence Cooper and Family

Deloitte LLP*

Elte/The Metrick Family*

Max and Larry Enkin Family Foundation*

Fujifilm SonoSite Canada Inc.

The DH Gales Family Charitable Foundation of Toronto*

Lorne & Carol Goldstein

The Honourable Jerry & Carole Grafstein*

Ronnen Harray*

Jay & Barbara Hennick and Family*

Warren & Debbie Kimel and Ron & Vanessa Kimel*

Albert and Temmy Latner Family Foundation

National Bank Financial Group*

Abe & Elsie Posluns and Family*

Sarcoma Cancer Foundation of Canada*



“When I was in a better position to give more, I wanted to give my time and reach out to others so they could see the greatness of the hospital.”

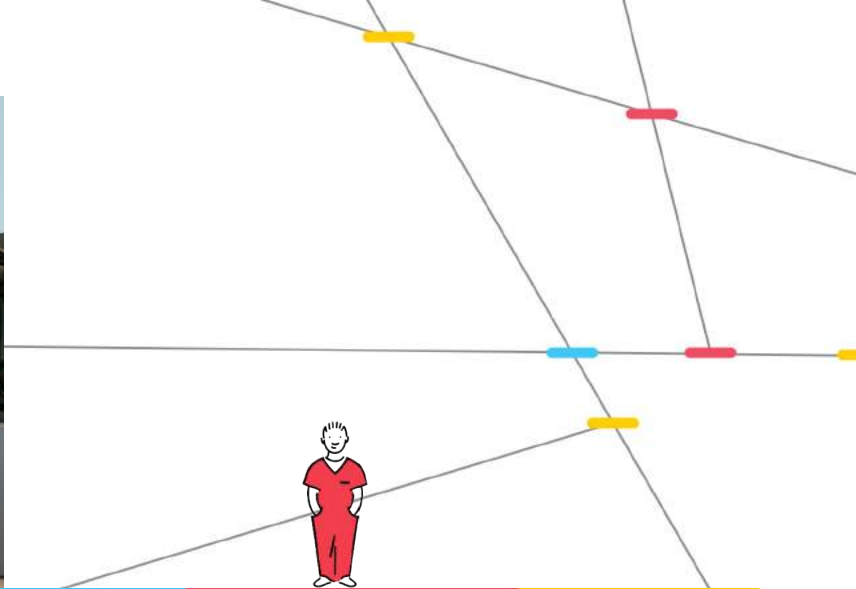
***Richard Pilosof
Chair, Investment
Committee, and Vice-Chair,
Board of Directors, Sinai
Health Foundation***

The Savlov Family
Alex Shnaider
Dr. Paul & Sandra Walfish and Family*

\$100,000-\$249,999

The Alva Foundation*
Estate of Dorothy Georgina Bell
Brent & Lynn Belzberg
Esther & Henry Bernick
Estate of Benjamin Herbert Birstein
Geoffrey Bledin
Brampton Brick Limited*
CIBC
Ricky & Peter Cohen and Lillian z”l & Jack Stupp z”l
ConDrain, Alfredo, Angelo & Antonio DeGasperis Families
James H. Cummings Foundation*
The Curtin Family
Camille Dan Family
David, Mark, Robert, Zev and Peter Daniels
John & Myrna Daniels

Dottori-Attanasio Family*
The Drimmer Family
Element Financial Corporation
Fengate*
Estate of Jack M. Fine
Ken & Rachel Flood
Patricia & Richard Fogler
George & Judy Frankfort
The B.I. Ghert Family Foundation
Michael & Libby Goldgrub
The Hanson Family
Estate of Frank Hardy
Heart & Stroke Foundation
George & Linda Heller
Estate of Gertrude Helperin
Alan R. Hibben*
Kenair Apartments Ltd. /Ken & Helen Rotenberg
Thomas E. Kierans & Mary L. Janigan
Shawn R. Kimel
Christopher & Grace Kwong
Lynda & Steven Latner
Mount Sinai Department of Obstetrics & Gynaecology
Mount Sinai Hospital Department of Surgery
The Mullin Family*
Mark & Natty Nashman
The Posluns Family
PwC*
Stephen & Suzie Pustil and Family
Lea Reichmann
Dani Reiss Family Foundation*
Melinda Rogers & Eric Hixon
Janis Rotman*
Penny Rubinoff*



“The Murray Koffler Urologic Wellness Centre at Mount Sinai Hospital is at the forefront of medical innovations in men’s health. We chose to make this an area of focus as it tends to be underfunded and required philanthropic leadership to foster this forward-thinking. Supporting this exemplary program will ensure the long-term health and wellness of our community.”

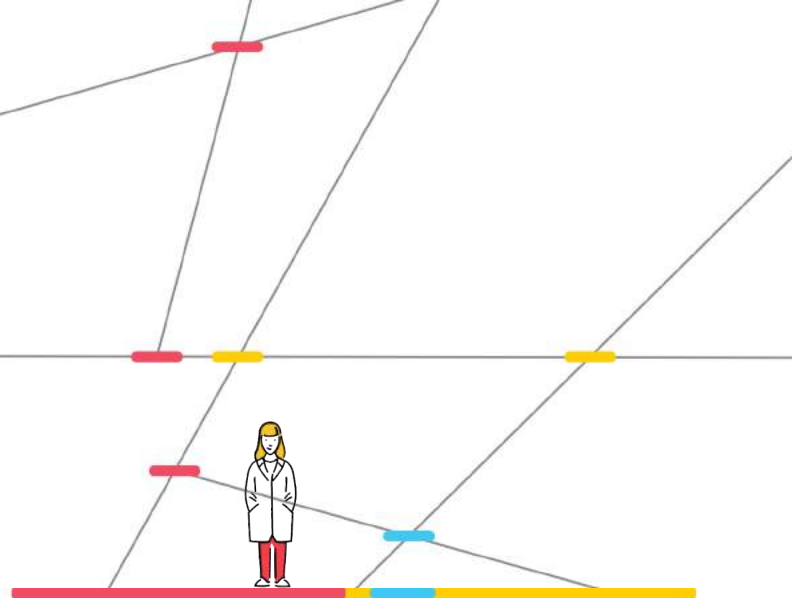
***Carey Kurtin, on behalf of
The Kurtin Family***

Harry Samuel
Thomas & Marjorie Schwartz
David Shaw and Gary Miller
Alexandra Sherman & Brad Krawczyk*
Estate of Jill Blackburn Simons
Joseph & Mildred Sonshine Family
Southbridge Health Care LP
TD Bank Group
David Weinberger*
Marlene & Lewis Whiteson
Bert & Marilyn Winberg and Family
Graham & Gale Wright
The Walter & Helen Zwig Family
Anonymous (5)

\$50,000-\$99,999

Arron Barberian & Linda Rodeck
Estate of Klara Berkovitz
Sam & Rita Bresler and Family

Joseph Burnett
Dr. Ken Citron Charitable Trust*
Ian and Kiki Delaney
EY
Lawrence & Beverley Fein*
Fried, Frank, Harris, Shriver & Jacobson LLP
Harvey & Leah Fruitman
Peter Gilgan Foundation
Gerry & Estelle Gotfrit*
Gregory & Susan Guichon
Dr. Jay Charitable Foundation
L.I.U.N.A. Ontario Provincial District Council
The Maxwell and Ruth Leroy Charitable Foundation
Mark & Lindy Mandelbaum
Estate of Ivan Mark
Minto Foundation Inc.
David Morrison & Joanne Cohen
Jim Nicol and Family*
E. & G. Odette Charitable Foundation*
Peartree Securities Inc.
Andrew G. Phillips & Cathy Houston
RBC Foundation
The Cyril & Dorothy, Joel & Jill Reitman Family Foundation
Barrie D. Rose & Family
Steven Rosenhek
Jeff & Lori Rosenthal and Family
Estate of Pearl Rudin
Sage Investments Limited/Maxwell & Heather Gotlieb
The Samuel Sarick Family
The Shandex Group
Silver Family Charitable Foundaiton
Estate of Lilian Mary Eleanor Thomas
Mark Wiseman & Marcia Moffat



“We felt it was important to give back to the community in a way that honoured George Knudson's legacy and funded research, so we could find a cure.”

***Michael Albert
Committee Member,
Knudson Oakdale Pro-Am***

Dr. Agnes Wong & Mr. William Webb
Anonymous (2)

\$25,000-\$49,999

Peter Aceto & Sylvia Sutej
Gillian & Gordon Bogden*
Brookfield Asset Management
The Cadillac Fairview Corporation Limited
Clive Caldwell*
CB Richard Ellis Limited
Cello Capital
Centennial Principals Account
CentreCourt Developments
CGI Group Inc.
Dr. Grace K. Chan*
Colon Cancer Canada
Eli & Anita Dadouch and Family
Daniel Debow & Jordana Huber*
Dental Corporation of Canada Inc.
Victor Dodig
Robert & Ellen Eisenberg*
Helena Fabricius*
Barry & Varda Feiner
David & Elyssa Feldberg & Family
Jeffrey Feldberg & Waleuska Laso
The George and Golda Fine Family Foundation
Ron & Susan Flam
Gary & Barbara Fogler
Paul Gallagher*
The Global Group
Goldman Sachs Canada Inc.

Ori Goldman
George & Kay Goldlist and Family
Goodmans LLP
Alexander E. Grossman Foundation
Michael H. Gustin Trust
Robert Harding & Angel Yang
HBK Services LLC
Hudson's Bay Company
Invesco Canada Limited
ivari
Joint Department of Medical Imaging
Ian & Wendy Kady*
Allen & Sharon Karp*
The Kuhl Family*
Amy Lau & Anthony Lai*
The LeFrak Family
Dr. Sheldon L. Levy
Estate of Joan Lipton
The Fred A. Litwin Family Foundation
Jon & Nancy Love
Madison Homes and Forest Hill Homes*
Markham Rae
Robert & Deborah McFarland*
McMillan Family Foundation
The Menkes Family
MKP Capital Management, LLC
Mount Sinai Hospital Auxiliary
Elias Mulamoottil*
One William Street Capital Management LP
Zippora & Mark Orland
The Printing House
Robvest Corporation
Jay & Renee Rosenzweig*
Joel & Tammy Seigel
Kwei Hwa Seng*
Shlomo Sharon & Helena Frabricius*



"Dr. John Kingdom's research on a novel form of heparin to prevent the vascular damage of preeclampsia is something the Alva Foundation feels could have tremendous impact on a global scale, particularly in the developing world where preeclampsia occurs in 5-8% of pregnancies, and is among the top causes of maternal death. So we liked the potential for a highly-leveraged outcome of his research. And not only did this fit our Foundation's criteria beautifully, but we knew the funds would be managed in an effective manner."

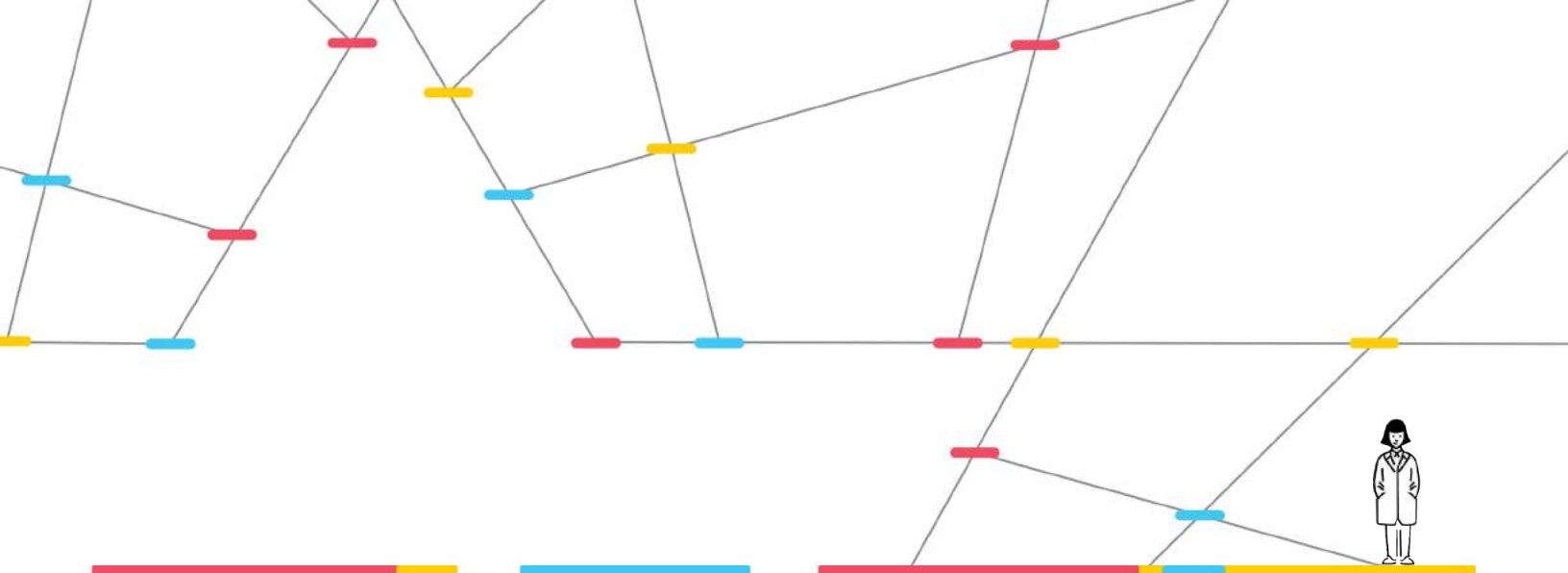
Graham Hallward, Alva Foundation

The Sherrington Family
Shoppers Drug Mart
Sun Life Financial
Larry & Judy Tanenbaum
Tora Foundation
Torys LLP
Triumph Asset Management Inc.*
Estate of F. Christopher Wilson
Robert Harding & Angel Yang
Anonymous (5)*

\$10,000-\$24,999

Accenture Inc.
Stephen Adler*
June Alikhan

Alvarez & Marsal Holdings
Arvan Rehab Group Inc.
Ascend Capital
Avid Dating Life Inc.
Sean C. Aylward
Jordan & Faith Banks
Barnes & Thornburg LLP
Linda Barnett
Bill & Karen Barnett
Rod Barrett
Estate of Margaret Linda Beck
Bee Clean
Eric & Sheryl Berke
Howard Bernick
BFI Canada, Inc.
Birch Hill Equity Partners
Blake, Cassels & Graydon LLP
BloombergSen Investment Partners
Gary Bluestein Charitable Foundation
BMO Financial Group
André Bourbonnais
Paul Bronfman Family Charitable Foundation
Canada Chinese Computer Association
Canadian Tire Corporation, Limited
CanDeal
Dr. Robert & Mrs. Rona Cappell & Family
Dr. Stanley & Lillian Cash
Cerner Corporation
Tony Cesaroni
John & Nancy Cieslak
Citicom Inc.
Cresa Toronto Inc.
Bob & Gayle Cronin
Davies Ward Phillips & Vineberg LLP
Mark & Susan Davis
Leo & Sandra DelZotto
Dr. Purvi Desai-Haribhakti
Philip & Lisa Draper*



Steve Dumanski
Esty Edell and Family
Philip R. and Donna Evans
Export Packers Company/The Rubenstein Family
Fasken Martineau DuMoulin LLP
FCO Advisors LP
Fidelity Investments Canada Limited
Joel Flatt*
Danny & Laurel Fleisher
The Kavelman Fonn Foundation
Miriam Frankel
Sydney G. Frankfort
The Freeman Family Foundation
George Friedmann*
Bryan & Davida Gerber
Jeffrey Goldlist
Golf Fore The Cure
Sheldon & Lindy Goodman
Great-West Life London Life Canada Life
Joel & Ruth Greisman
Jamie Grossman
Ciro and Caterina Gucciardi Charitable Foundation
Dorian Hausman
The W. Bernard Herman Family
James D. Hinds
Tom Hofstedter Family
Hudson's Bay Company
Hullmark Realty Canada Ltd.
IBM Canada Ltd.
Italian Canadian Savings and Credit Union
Jones Day
Katz Group Canada Inc.
Kaye Scholer LLP
K-Bro Linen Systems Inc.

KBS+p Canada LP
Marty Kelman & Gilda Tanz
Robert Lantos
Harry & Esther Lebovic
Michael & Caren Levy*
LIUNA Local 506 Training Centre
LIUNA Local 506
MarketAxess Corporation
Masters Insurance Limited
Geoff & Jill Matus Family
Mavone Investments Inc.
Elizabeth McCain
Archibald McCallum
Janice McCart
McLean & Kerr LLP
Grace McNamara
Doug & Kathleen McPhie
Jordy & Pam Mecklinger*
Merrydale Developments
Elana Metter*
Minden Gross LLP
Net Margins Inc.
Estate of Jean O'Brien
Saul & Sandra Plener*
Andy Pollack & Judy Winberg
Alex Prole*
Pure Industrial Real Estate Trust
Q Residential
Marc Ralsky and Correen F. Pacht
Morton & Carol Rapp
Raymond James Ltd.
Donald & Nita Reed
John & Diane Richardson
Robins Appleby Charitable Foundation



“We are the demographic that takes care of everyone in society – our kids, our parents, our families and friends. How can we take care of everyone else if we don’t take care of ourselves? We fundraise for everyone else, but not for ourselves. Please help destigmatize menopause and allow its worldwide expert, Dr. Wendy Wolfman, right here in our own city, to receive the funds she needs to broaden this critical research and mentor the budding medical minds for the benefit of us, our sisters and daughters and future generations of women.”

Carol Mitchell (R), pictured above with Dr. Wendy Wolfman

- Audrey & Graham Rosenberg and Family*
- In memory of Gerald & Norman Roth
- John A. Rothschild
- Robert Rubinoff
- Daniel Rumack & Gail Burnett-Rumack
- Saguenay Strathmore Capital Inc
- Judy & Sam Sapera
- Abraham and Pearl Schwartz
- Schwarz Family
- Estate of Samuel Jacob Seligman
- The Serruya Family Foundation
- Jeffrey Shankman
- Geoff Smith
- The Philip Smith Foundation
- Barry P. Sniderman
- Edward & Fran Sonshine
- Stikeman Elliott LLP

- James V. Sturino
- Estate of George Basil Tambakis
- TD Securities Inc.
- Thomson Reuters
- Warren Thomson*
- Tricon Capital Group Inc.
- The Ullman Family
- Irving & Sylvia Ungerman*
- Les Viner & Wendy Bellack-Viner
- Laurel and Kirsten Ward
- WB Family Foundation
- Maurice Joseph Weisfeld z”l & Louis Weisfeld z”l by Gabi Weisfeld*
- Allen & Janet and Jerry & Shelley Werger
- Westmount Guarantee Services
- Judy Winberg
- Florence & Mickey Winberg
- Chuck & Libby Winograd
- Jeffery Wise and Can-Rad Beauty Ltd.*
- Barbara Wolfe
- Estate of Joyce Wolfish
- Anonymous (3)

\$5,000-\$9,999

- 1241189 Ontario Inc O/A SPLASH
- Academic Clinicians’ Management Services
- Aimia
- Sam Ajmera
- Tom & Mary Akin
- Kenny & Julie Albert
- Anpro Environmental Group Inc.
- Avid Life Media
- Amexon Property Management Inc.
- Sean Bailey
- Bank of America Merrill Lynch



“We are a group of women supporting women’s health.”

Daryl Erdman
Member, Venture Sinai
Women

Michael & Holly Bellman
I. William Berger
Estate of Ada Berney
Eric M. Beutel
Leonard & Felicie Blatt
Bondfield Construction Company Limited
Boxes Next Day
Jennifer & Richard Bradlow
The Bradstreet Family Foundation
Anna Maria Braithwaite
Michael Bregman & Yetta Bregman and Family
Brettler/Mintz Foundation
The Brick Warehouse LP
Canada Running Series Inc.
Canadian Tri-Funds
CANNEX Financial Exchanges Limited
Salvatore and Anna Cerundolo
Jamie Chong
Colliers Macaulay Nicolls Inc.
Concord Adex
CQI Capital Management
Estate of Catherine Craig
Raymond G. Daniels
Raghunath and Yarwati Davloor
Tony diCosmo
Tim & Christine Duncanson
Durapaint Industries Limited
Moshe Eizenman

Equinox Development Inc.
Fenella Foundation
Darryl & Michelle Fisch
Howie & Deborah Fleisher
Lloyd & Gladys Fogler
Douglas R. Ford
Franklin Templeton Investments
Jeremy & Judith Freedman and Family
Joe & Budgie Frieberg
Patricia & Allan Friedland
Tom & Jacqueline Friedland
John Friedrichsen
Dean Gangbar
Elizabeth Gangbar
Sam Gertner and Family
Marilyn & David Gluskin
Linda & Robert J. Goldberger
Goodman & Company, Investment Counsel Ltd.
Cheryl & Mark Grammer
Al & Malka Green
Warren Green & Shellianne Bedder Green
Estate of Anna Greenfield
Shane Grosman
Sheldon & Marie Gross and Family
Reena Berlind, Lawrence Haber, Jeremy, Dylan and Daniel Haber
Richard & Pamela Hallisey

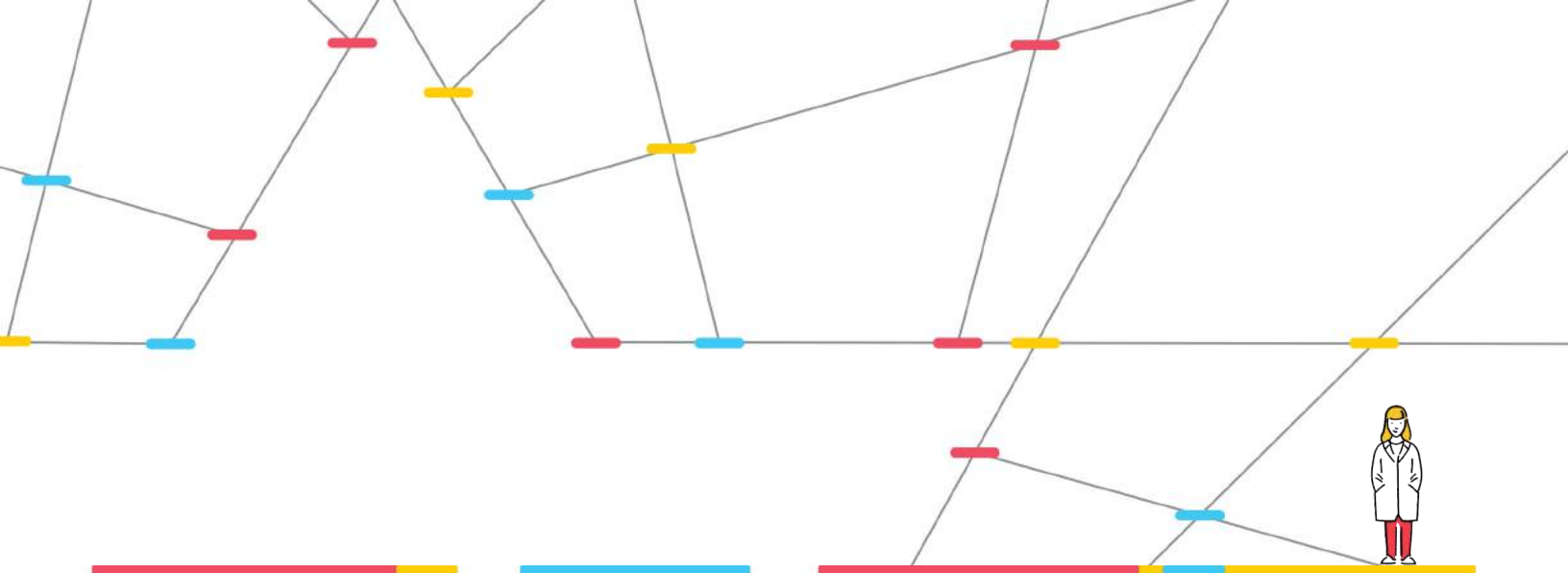


“Our family has been long-time donors and friends of Sinai and has always admired the exceptional care that is delivered here. When it came time to make a new gift, we gave a lot of thought to what type of gift would help the organization meet its goals. Supporting the Schwartz/Reisman Emergency Centre, Surgical Skills Centre and surgical equipment needs will help those who require acute care and educate the next generation.”

***Allan & Carol Weinbaum
Jack Weinbaum Family
Foundation***

William & Donna Harrison
Mary Ellen Herman
Tammy Herzog & Brian Brown
Ben & Edith Himel Family
Pauline Hood
Hugh's Room
Humboldt Properties Limited
Jane Humphreys
Stewart & Marla Ingles
Mary Lynn Jackowicz
Estate of Lilly Ellen Lydia Jensen
John Kaplan
Judith & Stephen Kauffman
Peter G. Kelk
Rodney & Sharon Kelson
Estate of Berendina Kerk
Moazzam Khan
King Koating Roofing Inc.
Tiana Koffler Boyman & Marc Boyman

Bobby & Jane Kofman
The Tom and Ruth Kritsch Family Foundation
Shiu Bing Kwan
Estate of Shui Yee Lee
Dr. Shoo Lee
Molyn & Bonny Leszcz
Joy Levine
James and Laura Lindover
LIUNA Local 837
LiUNA!
Audrey Loeb
Mark Liss & Sharon London Liss
Ana Lo-Pornsawanh
Mackenzie Financial Corporation
Jessica Malach
Estate of Barnet Markson
Fern Matlin
Michael McCain
McCarthy Tétrault LLP
Rachelle McConnell
Linda McCurdy
McGuire Woods LLP
Shawn & Kailee Mecklinger and Family
Mercedes-Benz Canada Inc.
Albert & Esther Michaels
Michelle & Michael Levy Family Foundation
Israel Mida & Laura Walsh
Milestone Foundation Inc
Betty Minden
Sam & Micki Mizrahi
Thomas Murphy and Family
Andre & Stephanie Nacawa
The Gulshan & Pyarali G. Nanji Family Foundation



Brad Nathan
 Erica and Andrew O'Born
 Jamie O'Born
 Estate of John Martin O'Brien
 Marla Orbach
 Oxford Properties Group Inc.
 Tony & Anna Pampena
 Estate of Willam Pape
 PCL Constructors Canada Inc.
 Adam & Robyn Polan
 Jonathan Pollack & Sacha Hayward
 Mimi & Sam Pollock
 Posner Metals Ltd.
 Primucci Holdings Ltd.
 Norman Raschkowan
 Natale Repole
 Reuben Klein and Eli Klein
 Andrea Rosen & Stephen MacDonald
 Annette Ross
 Peter Ruby
 SABIC Capital BV
 Andrew T. Sanders
 Judith Sanders
 David & Wendy Share
 Stanley & Donna Shenkman
 Bernard & Honey Sherman
 Bruce R. Shewfelt
 Milton & Joyce Shier
 Jason & Jenny Shinder
 Deborah Siegel
 Sigan Industries Inc.
 The Alex and Nelly Singer Family Foundation
 Paul & Carol Slavens

Estate of Joseph Soren
 Bruce & Olivia Sparks
 Squire Patton Boggs (US) LLP
 Manish Srivastava & Ying Soong
 Anthony Staffieri
 Michael Stern
 Roger & Marie Sutton
 T.G.H. Otolaryngology Research Group Inc.
 TD Securities Inc.
 The Hi Rise Group
 The Waugh Family Foundation
 Timbercreek Asset Management
 The Family of the late Lionel Larry
 Toronto Argonauts Football Club Inc.
 Debra & Steven Tuchner
 Mark & Stephanie Valentine
 Lou Vigoda
 Florence Weinstein
 Howard Wetston & Debbie Fischer
 Lawrence & Lori Wilder
 J. David Williamson
 Jerold & Gale Winter
 The Honey & Leonard Wolfe Family Charitable Foundation
 Jonathan & Amal Wolfe
 Michael & Carla Worb and Family
 Irwin & Elayne Wortsman
 Xerox Canada Limited
 Bernard & Carole Zucker
 Anonymous (8)

\$2,500-\$4,999

5 hour ENERGY
 Mercedes Benayon & Derrick Abraham
 Accurate Fasteners Ltd.

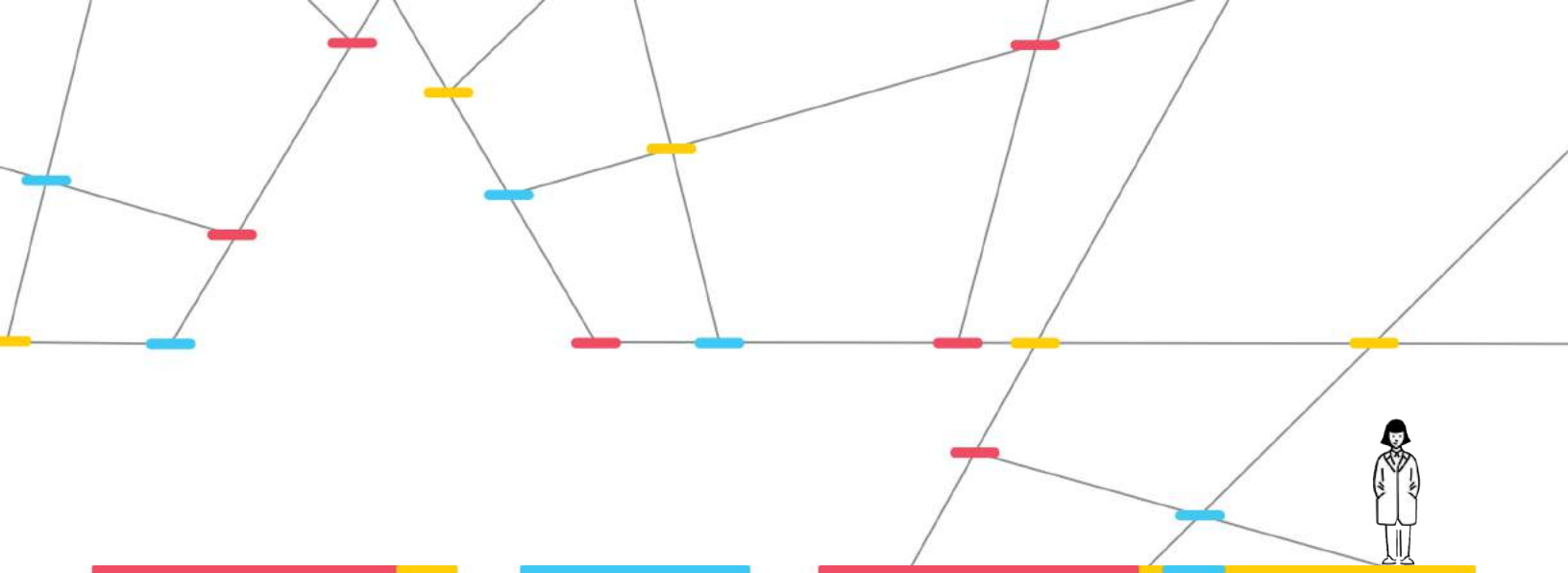


“For over a decade, Hold em’ For Life has been Sinai’s largest fundraiser and has raised critical funds to propel breast cancer research. It feels good to know that we have had a profound impact on the community and will continue to fuel discoveries that will save lives. Sinai is at the heart of our philanthropy.”

Andrew Hoffman and Tony Reale, Hold em’ For Life Charity Challenge

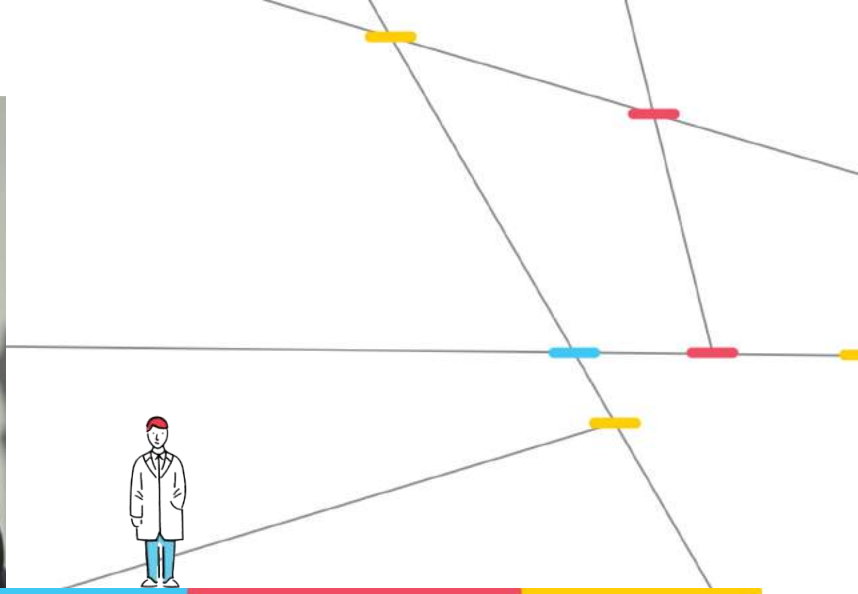
Aird & Berlis LLP
 Hussein Al-Dhalaan
 Allan Windows Technologies Ltd.
 Arnold Amber
 AMR LLP
 Jennifer Anderson
 Melyssa Aronson
 Artemis Corporation
 Lucas & Hayley Atkins
 Lloyd and Sharon Atkinson
 Don & Cookie Biback
 Janet Bomza & Joel Binder
 BPA Financial Group
 The Bridle Bash Foundation
 Jane Broderick
 Brookfield Financial Real Estate Group
 Rick G. Browne
 Jane Burns
 Paolo Campisi
 Canadian Council of Construction Unions
 Cavalluzzo Shilton McIntyre & Cornish LLP

The Characters Talent Agency (Toronto) Ltd.
 Martin Chasson
 Aki & Gail Chencinski
 Silvia Cheung
 J. Douglas Clements
 Marshall & Judith Cohen
 Commercial Bakeries Corporation
 Concrete Forming Association of Ontario
 Allen Cooper
 Elizabeth Crawford
 Franca Cushinan
 Harris Davidson
 Delgant Construction Limited
 Department of Otolaryngology - Head & Neck Surgery
 Jordan Dermer
 Trish Domi
 Dov Zevy Fund
 Dynamic Tire Corporation
 Elliott & Wendy Eisen
 Mounir El-Ayari
 Eldebron Holdings Ltd.
 Bill Elleker & Patti Kirk
 EllisDon Corporation
 Engelite Charitable Foundation
 Derek Erdman
 Stacie Etkin-Mandel
 Elissa & David L. Fingold
 Allan & Sheri Fleisher
 Forest Contractors Ltd.
 The Norman Black Foundation
 Cynthia Freeman-Gordon
 Bruce V. Freeman
 Jeremy & Elayne Freeman
 Friedberg Charitable Foundation



Future Paving 2169116 Ontario Ltd.
William Gachnik
Sylvia & Harvey Gefen
General Contractors' Section Toronto
Edward & Heather Gilbert
Sean Gilbert
Bruno Girard
Jordan & Lisa Gnat
Eleanor Godfrey
Michael Goldberg
Bradley and Nathalie Goldhar
Murray Goldman
Stephen & Lianne Goldsmith
Kevin R. Goldthorp
Gilbert & Grace Goodman
Earl Gorman
Cecil & Lee Graff and Family
Grand Touring Automobiles
Shira and Mitch Green
Irina & Avi Greenspoon
Ethan Grober
In memory of Larry Grossman - W.B.D.
Chris Guthrie & Lis Wigmore
Albert J. Haddad
Stephen & Andrea Halperin
Jay & Janet Harris
John Harris
The Hazcon Group Ltd.
Andrew, Leslie, Lauren & Ally Hoffman
Domenic Ieraci
Industrial Alliance Insurance and Financial Services Inc.
Intact Investment Management
International Union of Operating Engineers Local 793
J. J. McGuire General Contractors

Ellis & Sharyn Jacob
Brian D. Jafine
Allen Jefferson
Garth Jestley
Johnvince Foods
Donna & Hillel Kagan
Marvin & Bernyce Kalifer
David Kassie & Susan Harris and Family
Marvin & Estelle Kates
Sarah & David Kaufman
In loving memory of Cathy Kelly
Charlie J. Keslick
Marlene Klewans
Helene Korn
Koskie Minsky LLP
Henrietta Kostman
KPMG LLP
Manish & Deepa Kshatriya
Jessica Kudlats
Geddy and Nancy Lee
Ian Leggatt
Ryan & Ora Leopold and Family
Jason Elmaleh & Amy Lerman-Elmaleh
Paul & Joy Liebovitz
LifeLabs
Alex Lifeson
Gordon Lightfoot
Huazi Lin
Lions Group Inc.
Bernie & Beverly Little
LIUNA Atlantic Region District Council
LIUNA Local 183 Training and Rehabilitation Centre
LIUNA Local 625
Estate of Duncan Rae MacLeod

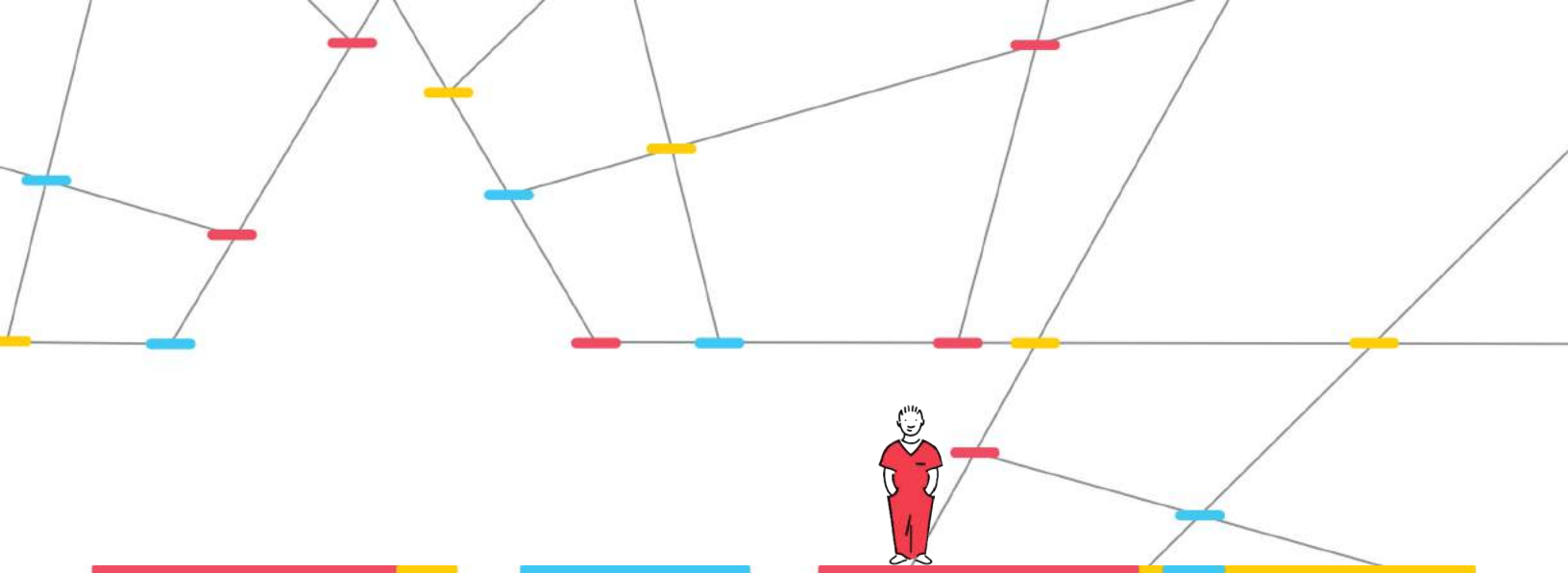


“What I’m really proud about with Leadership Sinai is not only has it raised over \$15 million, but it has created a community.”

Jamie Grossman
Co-Chair, Leadership Sinai

Gary Mandel
Manna Franchise Corporation
Marathon Asset Management, LP
Jason Marks
Irving & Esther Matlow
Maxims Limited Partnership
F.G. (TED) & Elda McDowell
Kenneth McGowen
McMillan Binch Mendelson LLP
James Merkur
David Merkur Holdings Inc.
Miller Bernstein Greenwood LLP
Andrew & Eryn Miller
Stephen & Risa Miller and Family
Michael & Sandy Minden and Family
Jan Mizrahi
Mosaic Sales Solutions Canada
David & Lorraine Nakelsky
NFP Canada
Northern Structures Ltd.
Norton Rose Fulbright
Nutritional Excellence
OPG Employees' & Pensioners' Charity Trust

Howard Ovens
Mark Pasternak
Mayeer, Stacey, Reese, Harley & Nathaniel Pearl
Michael Benjamin & Nancy Pencer
Elliott Peranson
H. C. Pitcher
John and Molly Pollock
Mark Porter
Susan Potts
Chris Pridham
Robert Printz
Provincial Building Trades Council
Brian Pukier
Barak Queija
The Reichmann Family
Brian Reiss and Rachel Shalit
The Restorers Group Inc.
Brian Rittenberg
Adrian Rocca
Rogers Communications
Earl Rotman & Ariella Rohringer and Family
Eli Rosenzweig
Neil Rudolph
Ken Rutherford
Sack Goldblatt Mitchell LLP
Sara T. Salgado
Frank Salmonds
Dominic Salvatore
Adam Sargon
Barbara Schechter
Simon Serruya & Deborah Schulich-Serruya
Robert & Doreen Scolnick
Jarrad & Sheila Segal
Harry & Lillian Seymour



Shade-O-Matic
Daniel Shapira
Gerald Sheff and Shanitha Kachan
David & Camille Sherman
Larry and Lorraine Sherman
Lorne & Arlene Shillinger
Sydney and Honey Shrott
Murial Siegelbaum-Gendel
Nathan and Lily Silver Foundation
Eric & Casey Silverberg
Murray Silverberg and Family and Dr. Marla Ash
Sheldon & Vivian Silverberg
Steven & Lauren Silverberg
Randi Silverstein & Paul Rausch
Max J. Singer Charities Trust
Slightham Family
Allan Small
Karen Soupcoff
Salvatore M. Spadafora
Sprott Inc.
David Stevenson
Bert & Barbara Stitt
Strategic Ventures Inc.
Gavin & Susan Swartzman
Talent Payment Services Limited
R. Blair Tamblyn
TD Bank
Teagarden Developments Ltd
Yitayesh Tegegne
Nazmin Teja
Marvin Teperman & Helen Cerny and Families
The Aubrey & Marla Dan Charitable Foundation
The Heavy Construction Association of Toronto
Stephen & Carole Title and Family
Larry & Frieda Torkin

Derek and Jennifer Tovich
Trient Asset Management
Thomas and Deborah Tutsch
John & Rosie Uster
Dr. J. David & Claire Van Loon
Vector Financial Services Ltd
Waddington Family Fund at the Toronto Community Foundation
Goldie Wassermuhl
Richard & Wendy Wengle
Carole Winberg
Manny Winopol
Nan & Jack Wiseman
Renée & Ralph Wolfe
Henry J. Wolfond
Martina Wong
Caroline Woodgett
Yamada Family Foundation
Bernadette Yuen
Rochelle Zubcoff
Anonymous (8)



Transforming the lives of people with complex health needs

Bridgepoint Active Healthcare is the single largest organization in Canada to focus exclusively on research, teaching and care for people with complex health conditions. Supported by an award-winning, state-of-the-art facility, Bridgepoint is enabling unprecedented breakthroughs in care thanks to generous donations from the community that are helping fuel this innovation in a variety of ways.

Since coming together as Sinai Health System one year ago, we have made significant progress as an organization that will support our ambitious vision for becoming Canada's leading integrated health system. Similarly, Bridgepoint Foundation has strengthened the structure of our philanthropic community by entering into an agreement with Sinai Health Foundation to better support the needs of the organization. In this way, the vision of Bridgepoint is fully imbedded in and bolstered by the vision of Sinai Health System. Over this past year, Bridgepoint has celebrated a number of

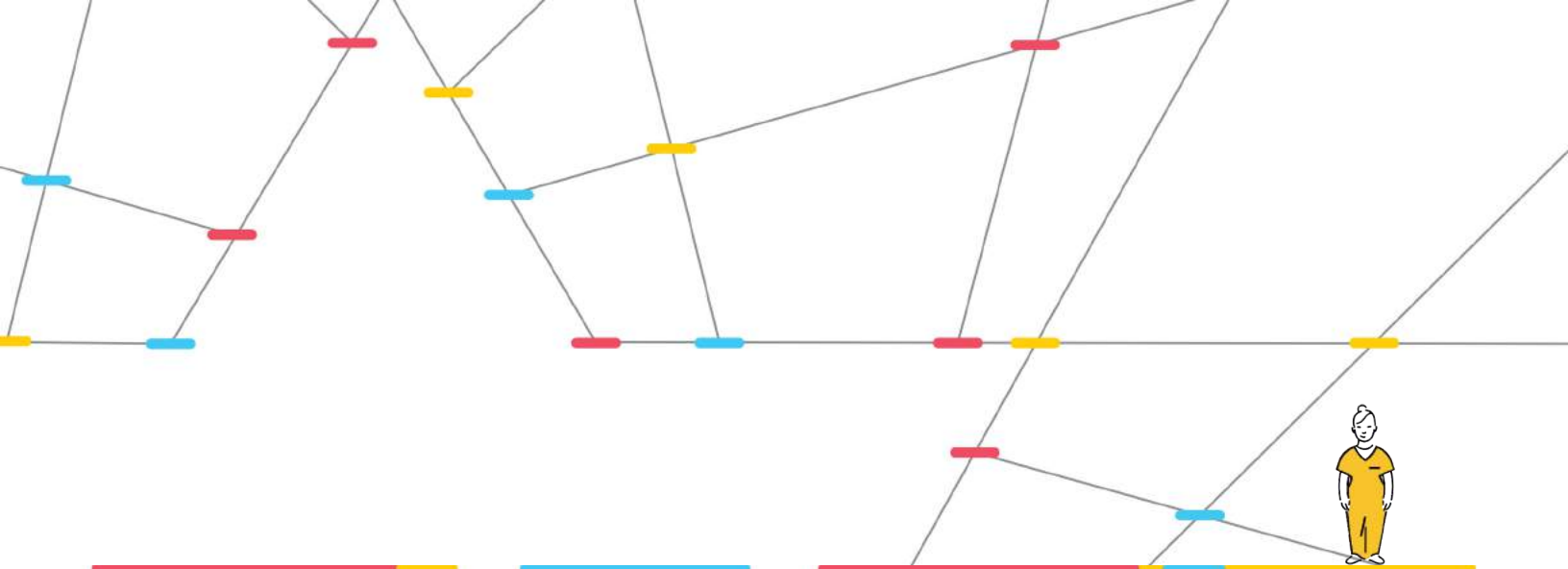
accomplishments that could not have been possible without the support of our donors. The examples that follow highlight how our supporters are helping us provide exceptional care that is delivered in an unparalleled space for healing and respite.

Paving the way for new pathways to care

For many years, Mount Sinai Hospital's Schwartz/Reisman Emergency Centre has been pushing boundaries to transform the way care is delivered not just within the hospital, but across the



Team Jeremy: Howard Ekstein, Richard Bondy, Ian Lightstone, Michael Sax



health-care sector. In this spirit, the creation of a new unit at Bridgepoint accepts patients directly from Mount Sinai's emergency department in an effort to avoid unnecessary admissions to acute care hospitals for certain patients. Similarly, encouraging plans are well underway to design new models of care that will provide a more seamless experience for orthopaedic, intensive care, complex medical and palliative care patients.

Opening the doors to a campus of wellness

For more than a decade Bridgepoint Active Healthcare has been on a journey to create an environment designed to inspire health and innovation, support healing and act as a welcoming, accessible focal point for patients, staff and the community. In July, a generous donation from the Spiro Tanenbaum Family Foundation funded the installation of a spectacular sculpture garden, meant to symbolize the vitality of the human spirit and the strength of the human body, inspiring health and wellness for all. A few months later, we marked the official close of the Bridgepoint Redevelopment Project with the final completion of the roads, landscaping and new public park. Many of our supporters were proudly on hand as we "officially" opened the front doors and changed our address to 1 Bridgepoint Drive.

Raising awareness through our community of supporters

Throughout the year, we look forward to hosting a number of trademark events that draw much-needed funds and awareness to our patient programs, facilities, research, academic pursuits and capital. The not-to-be-missed The Great Jewellery Heist, for example, gives attendees the opportunity to socialize at an elegant luncheon and participate in an auction of tempting jewels donated by leading designers, jewelers and style setters.

Other events, such as our annual Hero Ride, hit closer to home for some of our supporters. For the past three years, Ian Lightstone has embarked on the 250 km bicycle ride in memory of his son, Jeremy. "When our son, Jeremy, had brain cancer, he lost the ability to walk, and Bridgepoint really helped with his rehabilitation and physiotherapy," says Ian. "The hospital was also there for us from an emotional standpoint when our son passed away."

Each May, Ian joins a group of passionate cyclists for an epic ride from King City to Collingwood, and back. The ride through spectacular scenery is supported by Pfaff Porsche pace cars, and raises \$250,000 for the exceptional rehabilitation and complex care that Bridgepoint provides.



Marian Walsh, Tessa Virtue and Catherine Nugent at Heist

After losing their son, Ian and his wife started an initiative to name the internet cafe at Bridgepoint in his memory since he worked in the IT field before his death. Their Hero Ride team, Team Jeremy, has raised almost \$500,000 to date.

Thank you to our visionary donors for their lifetime commitment to Bridgepoint.



**This list represents donors
whose cumulative lifetime
commitments total more than
\$100,000 as of March 31,
2016.**

\$1M+

The Harold E. Ballard Foundation
Margaret & Lee Lau
Tim & Frances Price
RBC Foundation
Anonymous

\$500,000-\$999,999

BMO Financial Group
Bridgepoint Active Healthcare
Volunteer Resources
Hal Jackman Foundation
Colleen & Brian Johnston
Estate of Theresa Lang
Manulife Financial
TD Bank Financial Group

\$250,000-\$499,999

Brookfield Partners Foundation
Denys Calvin
CIBC
Jack L. Cockwell & Lynda Hamilton Bronfman
George & Katherine Dembroski
David Denison & Maureen Flanagan
Element Financial Corporation
Estate of Dora Ellis
Estate of Vincent Albert Grozelle
Green Shield Canada Foundation

HSBC (Canada) Inc.
Scotiabank
St. Joseph Communications
Sun Life Financial Services of Canada Inc.
Anonymous (2)

\$100,000-\$249,999

Karen & Ray Arbesman
Lloyd & Marie Barbara
Bay Street Invitational Fund
Jalynn H. Bennett
E.W. Bickle Foundation
Gerri & Paul Charette
EY
Richard & Darleen Falconer
Alastair & Diana Gillespie Foundation
Susan & Graham Gow
Great West Life, London Life and Canada Life
The William and Nona Heaslip Foundation
Tim & Linda Hodgson
KPMG LLP
Mr. and Mrs. Kam Chuen Kwan
Philip J. Lamb
David Leith
Margaret & Ian Lightstone
Mackenzie Financial Corporation
McCarthy Tétrault LLP
Lynn McDonald
Alan McMillan
Estate of Desmond John Messenger
PCL Constructors Canada Inc.
Plenary Group Canada
Brian J. Porter
PricewaterhouseCoopers Inc.

Robert F. Rose
R. T. & Francine Ruggles
Shearman & Sterling LLP
Estate of Christine Sinclair
Stantec Architecture Ltd.
Estate of Mary Stenli
Ann & Will Sutherland
Torys LLP
Tzu-Chi Foundation of Canada
Marian Walsh
The W. Garfield Weston Foundation

Thank you to our generous donors for the contributions they made this past year.



This list represents gifts and sponsorships made between April 1, 2015 and March 31, 2016.

** These donors have made new commitments of \$10,000 or more during this fiscal year.*

\$250,000+

Margaret & Lee Lau
Tim & Frances Price

\$100,000-\$249,999

The Harold E. Ballard Foundation
Colleen & Brian Johnston
Manulife Financial
R. T. & Francine Ruggles*
Anonymous

\$50,000-\$99,999

Jalynn H. Bennett
CIBC
Jack L. Cockwell &
Lynda Hamilton Bronfman
David Denison &
Maureen Flanagan
Element Financial Corporation

\$25,000-\$49,999

Kathleen Bresnahan
Denys Calvin
Groupe De Securite Garda Inc.

\$10,000-\$24,999

Salah J. Bachir
Lloyd & Marie Barbara
BMO Financial Group
Gillian & Gordon Bogden
Mike Cassels & Jennifer Carter
D+H
Dominic & Pearl D'Alessandro
Deloitte LLP
EY
Michele M. Goddard
The William and
Nona Heaslip Foundation
Hermès Canada Inc.
Millie Howson
KPMG LLP
The LeGresley Family Foundation
David Leith
Margaret & Ian Lightstone
Joseph Matasich
Mizrahi Developments
Osler, Hoskin & Harcourt LLP
David & Marie Pauli
PricewaterhouseCoopers Inc.
RBC Foundation
William & Meredith Saunderson
Shearman & Sterling LLP
Torys LLP
Anonymous

\$5,000-\$9,999

Accompass
Mohammad Al Zaibak
W. Bruce C. Bailey

Lindy Barrow
Bond Brand Loyalty
Borden Ladner Gervais LLP
Patti Bunston Gunn
Cineplex Entertainment LP
Gail Cook-Bennett
Richard Cooper
Thomas F. Corcoran
James Raymond
Cowling Foundation
Equifax Canada Co
Susan & Graham Gow
Gowlings
Hicks Morley Hamilton
Stewart Storie
Jackman Foundation
Johnson Controls
McCarthy Tétrault LLP
W Ross Mckean
McMillan LLP
Mediacom
Mark Merryfield
In memory of Magda Mihalik
Nexus Investment
Management Inc.
Martin & Penny Offman
Plenary Group Canada
Primaris Management Inc.
Raymond James Ltd.
Gary & Joanne Reamey Family
Audrey Loeb Ross & David Ross
Royal de Versailles Jewellers Inc.
St. Joseph Communications
TD Bank Financial Group

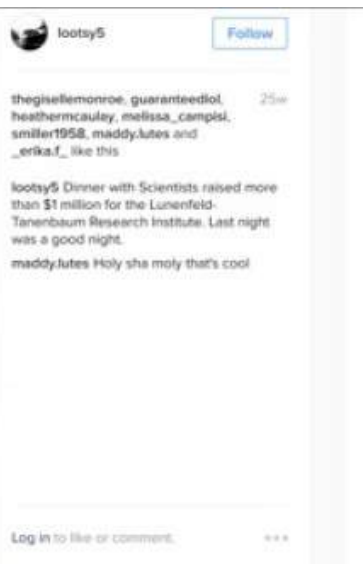
Kristine & Ivor Thompson
Visa Canada
Marian Walsh
Anonymous

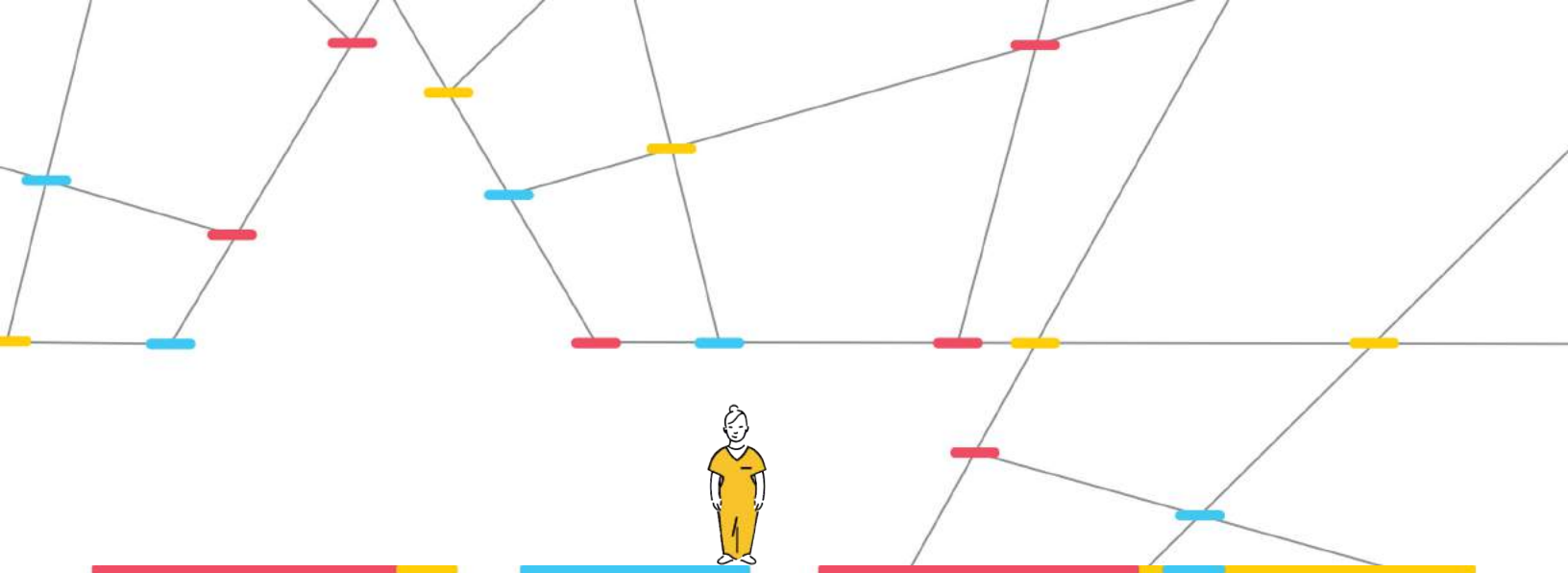
\$2,500-\$4,999

Bailey & Company Inc.
Andrew Barnicke
Bridgepoint Active Healthcare
Volunteer Resources
Burgundy Asset Management Ltd.
David Yurman
The Mariano Elia Foundation
Google Canada
The Honourable Jerry &
Carole Grafstein
John & Velvet Haney
Kay Iwin
Juniper Park
Tony Martino
McKinsey & Company
Michael & Julia Sax
Scotiabank
Isadore & Rosalie Sharp
Maureen & Wayne Squibb
Dennis & Denny Starritt
TELUS
Tesari Charitable Foundation
David Wilkin
Mark Wiseman & Marcia Moffat
Greg Yuel
Kenneth Zuckerman

Social Media Connections

We love engaging with our community online and appreciate the open dialogue, perspectives and thank you messages from across our campuses that help us deliver better care. We hope you continue to connect with us in this meaningful way.





Jennifer Hicks @jensteecks

Always so inspiring to offer #ArtsRehab sessions @BridgepointTO. Art is healing, healing is art! #artshealth

1

4:45 PM - 10 Mar 2016

CatherineJMacKinnon @cjmackinnon

Today marks 2 months since major surgery. I'm very grateful 4 staff at @MountSinai. Challenges w/walking is improving. :) #defeat #sarcoma

5

6:22 PM - 8 Dec 2015

Larry Singer @santobrother

Great outing today; thanks to @CircleofCareOnt; not to mention @southstburgerco. Able to give Sylvia some variety. #dementia #caregiving

1

2:52 PM - 6 Apr 2016

Adam Straker @AdamStraker1 - Apr 19

Discharged today with our new son. Many thanks to everyone at @MountSinai. Great professionals and lovely humans!

1

10

Jenny Hardy @jennyhardy

Thank you @BridgepointTO for hosting today's important conversation about seniors care. #GSCFdoingthingsdifferently

2

2

Fabiana Bacchini @FabianaBacchini

#rns2015 and our miracle baby walked the finish line @supportsinai #gratitude

1

3



Thank you. Merci. 谢谢. 唔該. Gracias. Obrigado. شکرا.
Спасибо. நன்றி. cảm ơn bạn. متشکرم. ਤੁਹਾਡਾ ਧੰਨਵਾਦ. תודה.

To our staff, donors and community of supporters, we are forever grateful.



"I'm inspired to stand beside you and I'm honoured."
– Marian Walsh
Associate CEO and Chief Transformation Officer



"I want to thank the staff who have almost been like a second family to me."
– Karim, Patient and Volunteer



"The staff go above 100 per cent and try to get you back on your feet."
– Moe, Patient



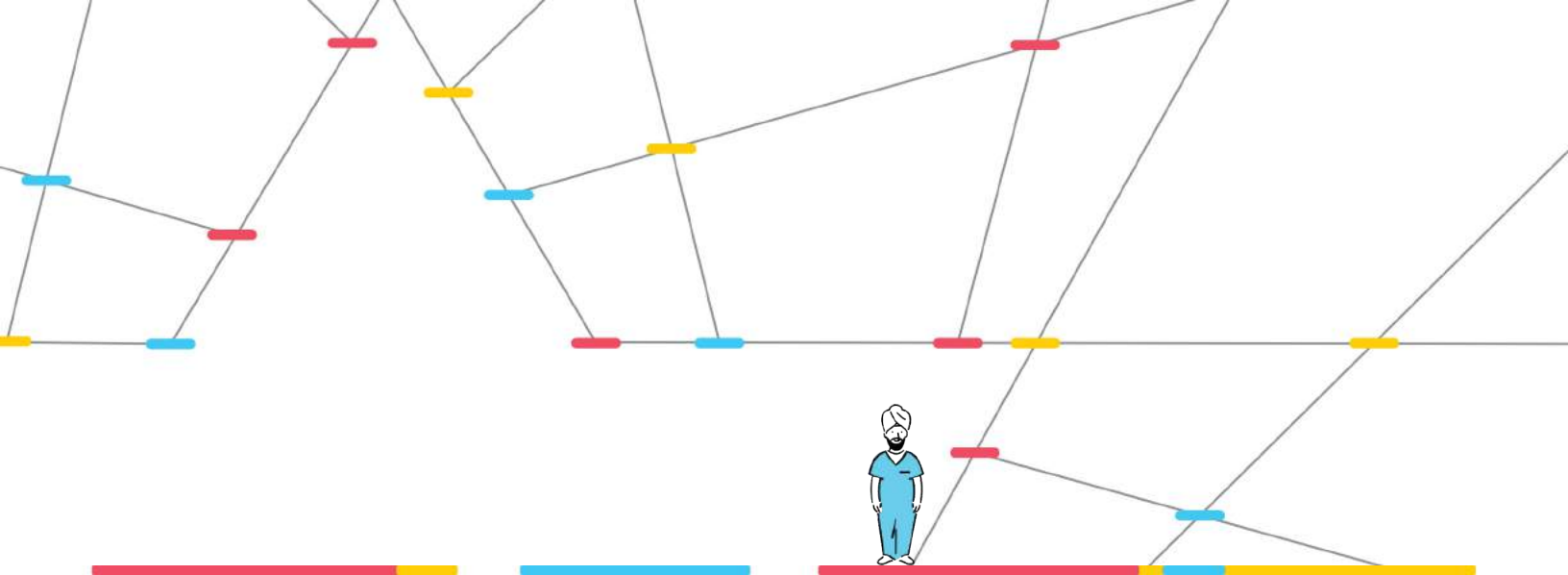
"Thank you to the doctors, support staff, nurses and donors for helping me through this journey and saving my life."
– Jennifer, Patient



"Never doubt that a group of thoughtful and committed citizens can change the world."
– Fabiana, Patient



"To me, this is the best place I could have come to."
– Ken, Patient



Our Vision, Mission and Values

Sinai Health System marked its one year anniversary with a bold, new Vision, an ambitious Mission and Values that are a tribute to our collective histories. Punctuated by a new visual identity, these elements are a nod to our past and our guideposts that will propel us into the future.

Vision

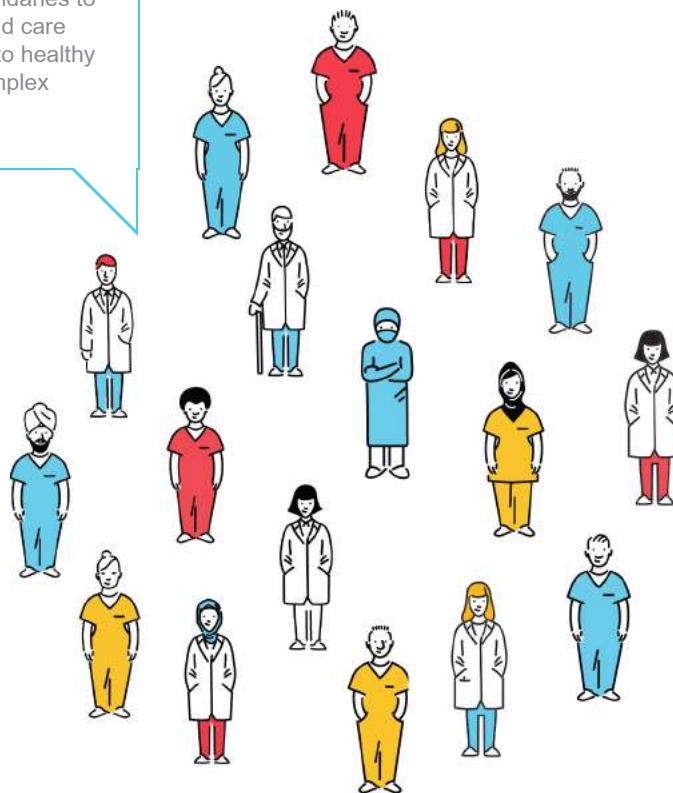
Canada's leading integrated health system, pushing the boundaries to realize the best health and care from healthy beginnings to healthy aging for people with complex health needs.

Values

Person-centred care
Excellence
Collaboration
Accountability
Equity
Innovation

Mission

Sinai Health System delivers exceptional care in hospital, community and home, focusing on the health conditions with the greatest impact on the overall health of the population. We discover and translate scientific breakthroughs, develop practical health solutions, educate future clinical and scientific leaders and lead efforts to eliminate health inequities.





Sinai Health System

MOUNT SINAI HOSPITAL
Joseph and Wolf Lebovic Health Complex
600 University Avenue
Toronto, Ontario M5G 1X5
sinaihealthsystem.ca



Sinai Health Foundation

MOUNT SINAI HOSPITAL
Joseph and Wolf Lebovic Health Complex
1001-522 University Avenue
Toronto, Ontario M5G 1W7
supportsinai.ca